

OEM Product Guide

Water controls for
a modern world



Contents

Welcome to our complete range of OEM products and solutions.

RWC family of brands	4	Pressure Relief Valves	42
Our brand story	6	102 Series Potable Water Pressure Relief Valve	44
Pioneering OEM solutions	8	104 Series High Capacity Potable Water Pressure Relief Valve	46
Environmental, social and governance (ESG)	10	107 Series Potable Water Pressure Relief Valve	47
Sectors and applications	12	100 Series High Capacity Sealed Heating System Pressure Relief Valve	48
Discover our OEM product range	14	101 Series Sealed Heating System Pressure Relief Valve	49
Inlet Control Valves	16	Pressure Relief Valve Cartridges	49
Compact One Piece Inlet Control Group	18	Expansion Vessels	50
22mm Inlet Control Valve	19	Potable Expansion Vessels	52
Compact One Piece Inlet Control Group	19	Heating Expansion Vessels	53
22mm Two Piece Inlet Control Valve	20	Expansion Vessel Fixing Kit	54
1" High Flow Two Piece Inlet Control Valve	20	Replacement Expansion Vessel Membranes	54
28mm High Flow One Piece Inlet Control Valve	21	Potable Water Shock Arrestor	55
320T Pressure Reducing Valve	22	Bespoke Kits	56
Compact In-line Core Relief Manifold	22	G3 Unvented Kits	58
Cartridge Style Core Relief Manifold	23	Easifit Water Heater Kits	59
Pressure & Temperature Relief Valves	24	Heating System Components	60
CPT15 & CPT22 Pressure & Temperature Relief Valves	26	Easifit® Sealed System Kit	62
High Pressure & Temperature Relief Valve	28	FBSP Anti-Legionella Valve	63
TPR28 Pressure & Temperature Relief Valve	28	Differential Bypass	64
FVMX Pressure & Temperature Relief Valve	29	Automatic Air Vents	65
Specialist Pressure & Temperature Relief Valve	29	Filling Loop with Integral Check Valve	66
Pressure Reducing Valves	30	Temperature Control	68
312 Compact Pressure Reducing Valve (Cold)	32	Heatguard® Tempering Valve	70
312 Compact Pressure Reducing Valve (Hot)	33	Masterguard Commercial Tempering Valve	71
Easiset 320 Series (Cold) Pressure Reducing Valve	34	Easifit TMV2/3 Thermostatic Mixing Valve	72
Easiset 320 Series (Hot) Pressure Reducing Valve	35	Thermostatic Mixing Valve	73
314 Dial Up Pressure Reducing Valve	36		
315i Commercial Pressure Reducing Valve	37		
312 OEM Series	38		
Predator Pressure Reducing Valve	38		
Pressure Gauges	39		
Replacement One Piece Pressure Reducing Valve Cartridges	40		

Backflow Prevention	74	OEM Related Components	90
Floguard Single Check Valves	77	Flexible Hoses	92
Floguard Double Check Valves	78	Automatic Anti-Vacuum Valves	92
Tundishes	79	Mini Isolating Ball Valve	93
Commercial Type BA RPZ Valve	80	Protecto® YC In-line Strainer	93
Compact STBA RPZ Valve	81	Nickel Plated Lever Ball Valve for Water	94
Electronic Controls & Thermostats	82	Floreng Isolating Valve & Strainer	96
Cylinder Thermostats	84	Pump Isolating Valves	96
Two Port Zone Valves	85	Accessories	97
240v Wired Programmable Thermostat	85	Key information	98
Battery Operated RF Programmable Thermostat	86		
240v Wired RF Programmable Thermostat	87		
240v Hot Water Timer	88		
Gateway	89		
Wiring Centres	89		





RWC family of brands

Discover more about our growing family of integrated brands, brought together by leading global plumbing group RWC. Explore our range of solutions sharing the same DNA of trusted, time-saving innovation and precision-engineered reliability.

Our RWC family of brands are connected by the design ethos of making lives easier, safer and more sustainable for the delivery of water and fluids. Our high-quality products are widely available through an extensive network of stockists and our expert team is always on hand to discuss your specialist requirements.



Push-fit connectors and systems for plumbing, drinks dispense, water treatment, compressed air, telecoms, automotive and OEMs.



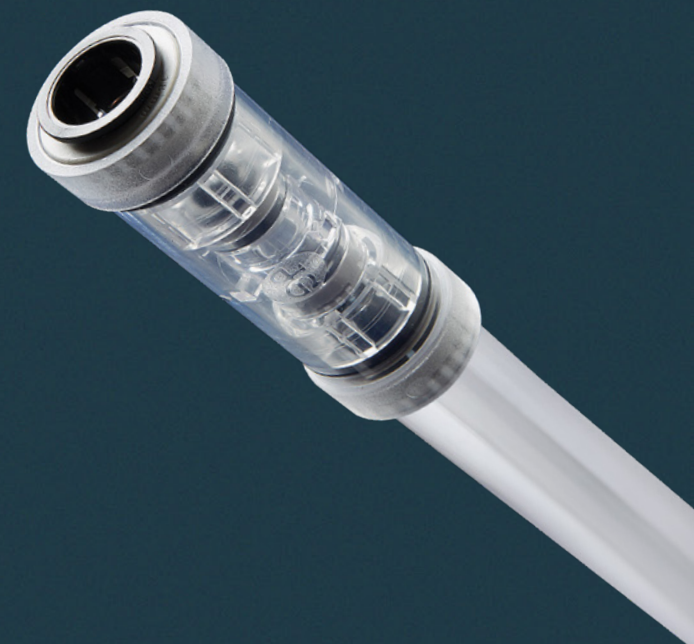
A complete plastic push-fit plumbing system for hot and cold water and central heating applications.



Water control valves for plumbing and heating, including pressure, temperature and specialist combination valves.



Brass push-fit connectors for plumbing, as well as brass fittings and aluminium pipe for compressed air and pneumatics.



Our brand story

The Reliance name in water control valves was born in 1949 with a passion to protect people and property. As the business grew, we developed many industry-leading innovations, including pressure reducing valves and the first low pressure relief valve, as well as the world’s first packaged unvented heating storage system that would go on to transform the industry.

Fast forward to today and Reliance Valves is a global brand focusing on the design and manufacture of valves for the control of water pressure, temperature and flow, plus components for sealed heating systems.

Our innovative spirit continues, with new products developed to make lives easier, safer and ever more reliable.



\$1.2 billion + group turnover	58 global locations	29 distribution hubs	5 innovation centres
Billions of our products are used worldwide	14 manufacturing plants	60+ countries served worldwide	



Pioneering OEM solutions

Improve performance and efficiency with Reliance Valves OEM solutions.

For over 70 years, Reliance Valves has been pioneering water control valves and heating system components to transform performance and efficiency for the plumbing and heating industry. We have a long history of working with the best-known brands in the industry, providing OEM plumbing and heating solutions to ensure safe and efficient water and heating distribution.

Leading the industry forward, today and tomorrow.

With over 700 patents, industrial designs and trademarks across the globe, we continue to lead and drive the industry forward. To fully earn the trust of our customers, we apply five key pillars when developing our products and solutions.

Our five key product development pillars:



1. Innovation

We set the benchmark when it comes to water controls through extensive research, customer-led insights and engineering excellence.

Our talented teams keep pace with the latest developments in building design, legislation and standards to invent and enhance products to drive efficiencies and address key customer challenges.



2. Quality

Our products are robust and hardwearing, made to the highest specifications, using pioneering techniques and only the very best materials.

We'll meet and exceed industry standards when it comes to quality control and testing so customers can specify our products with complete confidence.



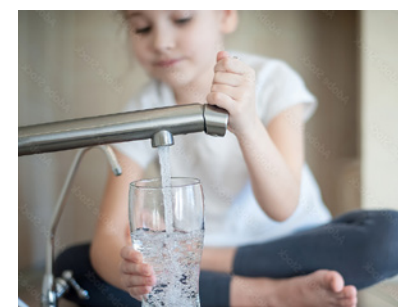
3. Simplicity

Designed with simplicity in mind, our OEM plumbing and heating solutions are developed for ease of installation and minimal maintenance, saving customers time and helping to reduce overall project costs.



4. Reliability

We consistently deliver a broad and innovative range of water controls, backed by technical expertise, safety-critical design and service that customers can rely on.



5. Sustainability

Our products help customers achieve their sustainability goals, from maximising energy and water efficiencies to offering time and labour-saving innovations for the optimal deployment of resources.



Accredited and assured

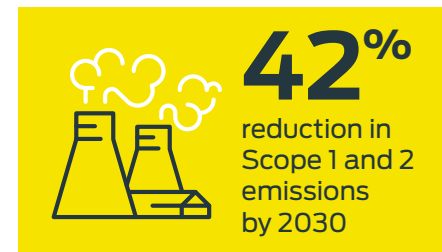
Reliance Valves provides customers with complete confidence in its products and services and are accredited to the following standards:



Environmental, Social and Governance (ESG)

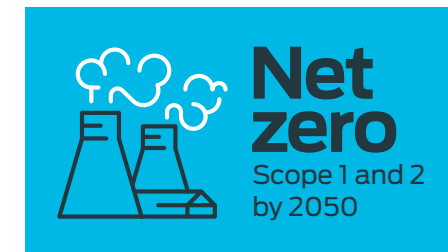
Environmental

We're integrating sustainability into our manufacturing practices and our organisational culture.



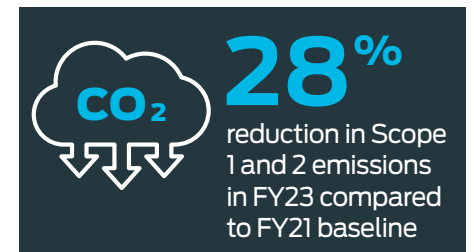
Greenhouse gas emissions

We have set targets for Scope 1 and 2 emissions reduction that are aligned with the Paris Climate agreement.



Plan in place

We have developed an actionable plan for decreasing Scope 1 and 2 emissions that includes purchasing renewable energy and enhancing operational efficiency.

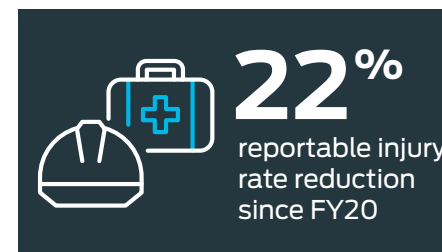


Path to Net Zero

We have significantly reduced our Scope 1 and 2 emissions by purchasing renewable energy and investing in efficient manufacturing equipment.

Social

Our social strategy is focused on a safe environment for our people that actively promotes diversity, equity and inclusion. We're also committed to supporting our communities around the world.



Everyone Safe, Every Day

We've launched a multi-year program focusing on risk management, behavioural safety, and standardised reporting.



Gender diversity

We have set ambitious gender diversity goals across the business.



Employee support

ERGs are volunteer-led groups that play an important role in generating grassroots energy and driving engagement in a diverse, inclusive workplace.

Governance

Sound governance and annual reporting will ensure transparency and accountability toward our identified targets. As best practices and international standards evolve, so too will our programme.



Enhancing oversight

A new executive-level ESG steering committee supports the Board in exercising its ESG duties.



Rewarding ESG

We have tied ESG key performance indicators to the executive team's compensation.



Enterprise risk management

We evaluate climate-related risks and opportunities in order to build on our understanding of strategy and actions needed to remain resilient when facing effects of climate change.

Sectors and applications

At Reliance Valves, we have created a broad range of products to help control the temperature, flow and efficiency of water supply and distribution within commercial and domestic plumbing and heating systems.

We pride ourselves on gaining insights from our customers to help shape our future products. Whatever the sector, and whatever the commercial and legislative requirements, we can provide the perfect solution for modern buildings.

Public health is always paramount – we will meet the regulations so you can ensure water safety at all times but, this is also about efficiency as much as reassurance. Installing the right products for the right outcome, each and every time.



Commercial

Many of our water temperature and flow valves, and heating system components, are used across all types of commercial buildings. They silently do their job to provide safety, efficiency and to meet the highest legislation, standards and best practice.



Care homes

All care homes should operate to the highest safety and hygiene standards. We help make this possible with our range of water control valves and heating system components, which are specifically designed to ensure resident safety and wellbeing.



Hospitals

Providing solutions to meet or exceed all current safety and hygiene standards, our temperature control and flow control valves are designed to boost efficiency and provide cost-saving opportunities without compromising on quality.



Education

There are no shortcuts to providing heating and water for schools, colleges and universities. With the welfare of children and young people at stake, safety is of the utmost importance. And we provide a range of solutions ensuring precisely that.



New build homes

New build developments demand efficient plumbing and heating systems that are cost-effective, simple to install and that meet all necessary legislations. We offer a range of water control valves and heating system components to meet these exacting needs.



Multi-occupancy homes

Multi-occupancy buildings such as apartment blocks, student accommodation and hotels present building designers and specifiers with multiple challenges. Our range of products are designed to address these challenges ensuring optimal safety, performance and efficiency.



Sports & leisure

Sports and leisure is all about performance. Not just with the activities which take place, but also in the facilities. Our wide range of products for plumbing and heating are designed to provide optimal performance and efficiency.

Discover our OEM product range

From our branded temperature and flow control valves to heating system components, customised products and bespoke engineered solutions, we offer an extensive range of OEM plumbing and heating solutions for the modern built environment.

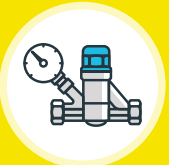
Whether you need to improve system performance, safeguard people and property, meet legislative requirements or maximise energy and water efficiency, our high-performance products are designed to help you achieve your goals.

Our team of experts are on hand to discuss your next design solution or innovation.



Inlet Control & Safety Valves

Time and space saving valves that meet functional and safety requirements of G3, including inlet control valves and safety relief valves in a selection of sizes and pressure settings.



Flow control

Precise water control valves to regulate flow and pressure, including pressure reducing valves, ball valves, check valves, water meters and leak detection systems.



Heating System Components

Versatile solutions for the precise and safe control of sealed heating systems, including pressure relief valves, tundishes, expansion vessels, thermostats, heating kits and more.



Temperature control

Reliable and consistent temperature control valves providing optimal safety and comfort, including thermostatic mixing valves as well as tempering, balancing and blending valves.

Inlet Control Valves

Reliance Valves has a long history of providing high quality, innovative control valves to the unvented hot water industry.

We are one of the first manufacturers to pioneer an inlet control package featuring a pressure reducing valve, an expansion relief valve and a single check valve.

We have grown and developed with the industry, leading to today's single body, multi-function valves.



Compact One Piece Inlet Control Group

Combination valve for unvented cylinder safety that features a pressure reducing, pressure relief and check valve with integral strainer.

Features and benefits

- Integral strainer
- Balanced cold water take-off
- Drop tight pressure reducing cartridge
- Prevents over pressurisation
- Single check valve
- Dedicated expansion vessel connection (on some models)
- Rotating expansion relief valve
- Suitable for cold water use only

SKU	Description	Model	Size (mm)
CWIC355030	Compact One Piece Inlet Control	3 bar PRV & 6 bar Relief Valve	22
CWIC355035	Compact One Piece Inlet Control	3 bar PRV & 4.75 bar Relief Valve	22
CWIC355040	Compact One Piece Inlet Control	2 bar PRV & 6 bar Relief Valve	22
CWIC355045	Compact One Piece Inlet Control	2.1 bar PRV & 8 bar Relief Valve	22
CWIC355050	Compact One Piece Inlet Control	1.5 bar PRV & 3 bar Relief Valve	22
CWIC355055	Compact One Piece Inlet Control	1.8 bar PRV & 3.5 bar Relief Valve	22
CWIC355060	Compact One Piece Inlet Control	3 bar PRV & 5 bar Relief Valve	22
CWIC355065	Compact One Piece Inlet Control	3 bar PRV & 8 bar Relief Valve	22
CWIC355070	Compact One Piece Inlet Control	3.5 bar PRV & 8 bar Relief Valve	22
CWIC355090	Compact One Piece Inlet Control	3.5 bar PRV & 6 bar Relief Valve	22
CWIC355200	Compact One Piece Inlet Control	3.5 bar PRV & 6 bar Relief Valve without cold water take-off	22

Accreditation:



22mm Inlet Control Valve

A brass bodied inlet control with an inclined pressure reducing valve to maximise flow rates.

Features and benefits

- Integral Strainer
- Superior flow rates
- 'Drop tight' pressure reducing cartridge
- Prevents over pressurisation
- Single check valve
- Rotating expansion relief valve

SKU	Description	Model	Size (mm)
CWIC200001	Inlet control valve with cold water take-off and expansion vessel connection	3/6 bar	22

Accreditation:



Compact One Piece Inlet Control Group

Combination valve for unvented cylinder safety that features a pressure reducing, pressure relief and check valve with integral strainer.

Features and benefits

- Integral strainer
- Balanced cold water take-off
- Drop tight pressure reducing cartridge
- Prevents over pressurisation
- Single check valve
- Rotating expansion relief valve
- Suitable for cold water use only

SKU	Description	Model	Size (mm)
CWIC110004	Parallel inlet control valve	3.5/6 bar	22

Accreditation:



22mm Two Piece Inlet Control Valve

A two piece inlet control which allows for the reducing valve, expansion relief valve and check valve to be sited separately.

Ideal for confined spaces or where the reducing valve is to be used to control a complete system.

Features and benefits

- Integral Strainer
- Balanced cold water take-off (some models)
- One-piece cartridge
- Compact design
- Prevents over pressurisation
- Integral check valve
- Dedicated connection for expansion vessel

SKU	Description	Model	Size (mm)
CWIC100050	Two piece inlet control valve, preset	3/6 bar	22mm
CWIC100100	Two piece inlet control valve with cold water take-off, preset	3.5/6 bar	22mm

Accreditation:



1" High Flow Two Piece Inlet Control Valve

A high flow, commercial, two piece inlet control which allows for the reducing valve and other control valves to be sited separately.

Features and benefits

- High flow rates up to 77 litres/min
- Dedicated connection for an expansion vessel
- 'Drop tight' pressure reducing valve
- Includes single check valve and relief valve
- High discharge capacity
- Integral strainer

SKU	Description	Model	Size (mm)
CWIC351300	Inlet control valve	3.5/6 bar	28
CWIC351301	Inlet control valve	2.1/8 bar	28
CWIC351303	Inlet control valve	3.5/8 bar	28
CWIC351306	Inlet control valve	Adj. 1.5-6/8 bar	28

Accreditation:



28mm High Flow One Piece Inlet Control Valve

A high flow, commercial, compact, one piece inlet control with balanced take-off and vessel connection point.

Features and benefits

- High flow one piece inlet group for large installations
- One piece cartridge style pressure reducing valve
- Customised pressure settings available
- Includes balanced take-off port with plug
- Includes expansion vessel connection port
- Complies with all relevant European Standards
- Integral single check valve, expansion relief valve and strainer

SKU	Description	Model	Size (mm)
CWIC352300	Inlet control valve	3.5/6 bar	28
CWIC352301	Inlet control valve	2.1/8 bar	28
CWIC352303	Inlet control valve	3.5/8 bar	28
CWIC352305	Inlet control valve	3/4.75 bar	28
CWIC352306	One piece Inlet 15mm ERV	2.1/8 bar	28
CWIC352310	Inlet control valve	Adj./8 bar	28

Accreditation:



320T Pressure Reducing Valve

Designed to be used as part of a two piece inlet group, the 320T includes the pressure reducing valve function and a balanced take-off port.

The outlet of the valve is FBSP threaded so that it can be easily combined with a core manifold comprising the check valve and pressure relief valve. The 320T is the replacement pressure reducing valve part for the 510 series Inlet Control Valve.

Features and benefits

- Can be installed in any orientation
- Balanced cold water take-off
- One-piece cartridge
- Compact design
- Retrofit model for the 510 series pressure reducing valves

SKU	Description	Model	Size (inches)
PRED320115	Pressure reducing valve with balanced take-off	1.5 bar	¾"
PRED320110	Pressure reducing valve with balanced take-off	2.1 bar	¾"
PRED320100	Pressure reducing valve with balanced take-off	3 bar	¾"
PRED320105	Pressure reducing valve with balanced take-off	3.5 bar	¾"

Accreditation:



Compact In-line Core Relief Manifold

A unique valve incorporating several different components to make one central safety device.

Designed specifically for unvented systems the core manifold consists of; a pressure relief valve cartridge, single check valve and a ¾" expansion vessel connection.

Features and benefits

- Dedicated expansion vessel connection point
- Can be used in conjunction with the 312 OEM pressure reducing valve to make a compact inlet control group
- Two pressure settings available
- Comes with a single check valve to protect against class two contamination risks

SKU	Description	Model	Size (mm)
CORE216000	Core manifold with check valve and expansion relief valve	8 bar	22
CORE216001	Core manifold with check valve and expansion relief valve	6 bar	28

Accreditation:



Cartridge Style Core Relief Manifold

The cartridge style core manifold includes an expansion relief valve with various different pressure settings.

A single check valve to protect against class 2 backflow risks and a dedicated expansion vessel connection. The manifold can be combined with the 320T pressure reducing valve to make a two piece inlet control that is suitable for use to control the mains cold water inlet to a water heater and can also be used as a replacement part for the COL K510 range of inlet control groups.

Features and benefits

- Cartridge style pressure relief valve for easy replacement and quick servicing
- Replacement CORE unit for the COLK510 series of inlet controls
- Wide range of pressure settings available
- Comes with a single check valve to protect against class two contamination risks
- Dedicated expansion vessel connection point
- KIWA approved

SKU	Description	Model	Size
CORE215002	Core manifold	6 bar	22mm x ¾"
CORE215103	Core manifold	8 bar	22mm x ¾"
CORE215005	Core manifold	3.5 bar	22mm x ¾"
CORE215008	Core manifold	5 bar	22mm x ¾"

Accreditation:



Pressure & Temperature Relief Valves

A Pressure & Temperature Relief Valve is the last line of defence to prevent a cylinder from overheating and safeguard against the damage this could cause.

Our range of products is vast, with sizes between ½" and 2", a choice of probe lengths, a variety of inlet and outlet connections and custom pressure settings. Reliance Valves has a Pressure & Temperature Relief Valve for every requirement.



CPT15 & CPT22 Pressure & Temperature Relief Valves

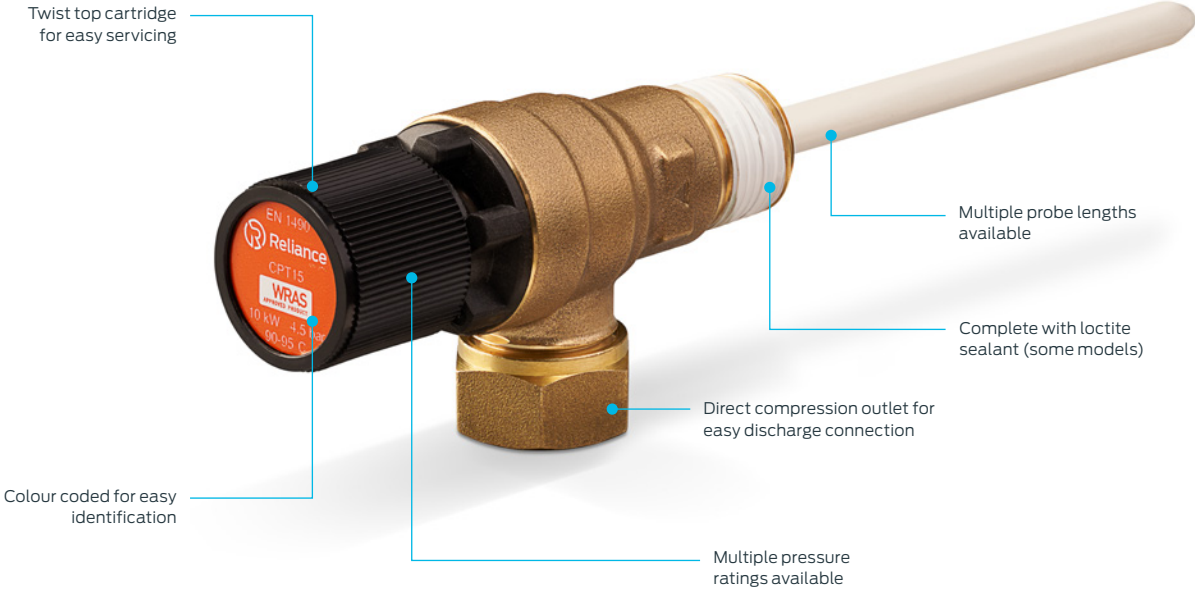
Discharges water to prevent cylinder damage from excess high temperature or pressure.

Reliance Valves Temperature & Pressure Relief Valves are compact pressure and temperature relief valves. The valve protects against over pressurisation, which can occur within an unvented hot water system if the input temperature or pressure controls fail.

The valves are designed to be installed directly to the upper portions of a hot water cylinder, as this is where the hottest temperature is found. If the system rises above 95°C, the wax mixture within the element of the temperature probe will expand lifting the valve off its seat and releasing water to the waste, reducing the pressure within the cylinder. If the water pressure increases (without temperature increase), the valve will stay closed until the set pressure of the relief mechanism is reached, at which point the valve will again open and the excess pressure is relieved. Some models come complete with a PTFE coating on the MBSP inlet thread that can save valuable time during installation.

Features and benefits

- Compact valve made from DZR brass
- Models with pre-applied PTFE coating on the inlet available
- Probe lengths are available from 45-195mm
- Pre-set pressure settings available from 4.5-10 bar
- MBSP threaded and compression connections available
- Silicone diaphragm on the internal seat
- Temperature probe is coated to prevent deterioration of the copper surface
- BSEN1490 certified and WRAS approved
- Suitable for hot water use only



SKU	Description	Model	Inlet size (mm)	Outlet size (mm)	BSP inlet size (inches)
PTEM540001	Pressure & Temperature Relief Valve	95mm probe preset at 7 bar no PTFE	–	15	½
PTEM540005	Pressure & Temperature Relief Valve	95mm probe preset at 10 bar c/w PTFE	–	15	½
PTEM540010	Pressure & Temperature Relief Valve	95mm probe preset at 7 bar c/w PTFE	–	15	½
PTEM540015	Pressure & Temperature Relief Valve	95mm probe preset at 4.5 bar c/w PTFE	–	15	½
PTEM540020	Pressure & Temperature Relief Valve	95mm probe preset at 6 bar c/w PTFE	–	15	½
PTEM540025	Pressure & Temperature Relief Valve	95mm probe preset at 7 bar no PTFE	15	15	–
PTEM540030	Pressure & Temperature Relief Valve	40mm probe preset at 7 bar no PTFE	–	15	½
PTEM540100	Pressure & Temperature Relief Valve	195mm probe preset at 7 bar no PTFE	–	15	½
PTEM540105	Pressure & Temperature Relief Valve	195mm probe preset at 7 bar no PTFE	15	15	–
PTEM540110	Pressure & Temperature Relief Valve	195mm probe preset at 10 bar no PTFE	–	15	½
PTEM540115	Pressure & Temperature Relief Valve	195mm probe preset at 6 bar no PTFE	–	15	½
PTEM585200	Pressure & Temperature Relief Valve	95mm probe preset at 4.5 bar c/w PTFE	–	22	¾
PTEM585205	Pressure & Temperature Relief Valve	95mm probe preset at 7 bar c/w PTFE	–	22	¾
PTEM585210	Pressure & Temperature Relief Valve	95mm probe preset at 10 bar c/w PTFE	–	22	¾
PTEM585250	Pressure & Temperature Relief Valve	195mm probe preset at 7 bar c/w PTFE	–	22	¾

Accreditation:



High Pressure & Temperature Relief Valve

The HP range is suitable for high capacity discharge up to 15 bar and 95°C. The valves use a rotational knob as a manual lifting mechanism.

Features and benefits

- High pressure capable for commercial projects
- High capacity discharge protection
- Protects against over temperature, discharge at 95°C
- Twist top design for ease of use



SKU	Description	Model	BSP inlet size (inches)	BSP outlet size (inches)
PTEM600200	Twist top Pressure & Temperature Relief Valve	95mm probe preset at 15 bar	1 ¼	1 ¼

Accreditation:



TPR28 Pressure & Temperature Relief Valve

Discharges water to prevent cylinder damage from excess high temperature or pressure.

Reliance Valves TPR28 Pressure & Temperature Relief Valves are high-capacity pressure and temperature relief valves. The valve protects against over pressurisation or extreme temperatures over 95°C, which can occur within an unvented hot water system if the input temperature or pressure controls fail.

The valves are designed to be installed directly to the upper portions of a hot water cylinder, as this is where the hottest temperature is found. If the valve is opened, it will lift off its seat and release the water to the waste, reducing the pressure or temperature within the cylinder.

Features and benefits

- High capacity protection for domestic and commercial applications
- Protects against temperatures rising above 95°C
- Prevents over pressurisation
- Lever style easing mechanism
- Available in different connection sizes
- Suitable for hot water use only



SKU	Description	Model	Outlet size (mm)	BSP inlet size (inches)
PTEM100050	Pressure & Temperature Relief Valve	195mm probe preset at 7 bar	28	1
PTEM100060	Pressure & Temperature Relief Valve	195mm probe preset at 10 bar	28	1

Accreditation:



FVMX Pressure & Temperature Relief Valve

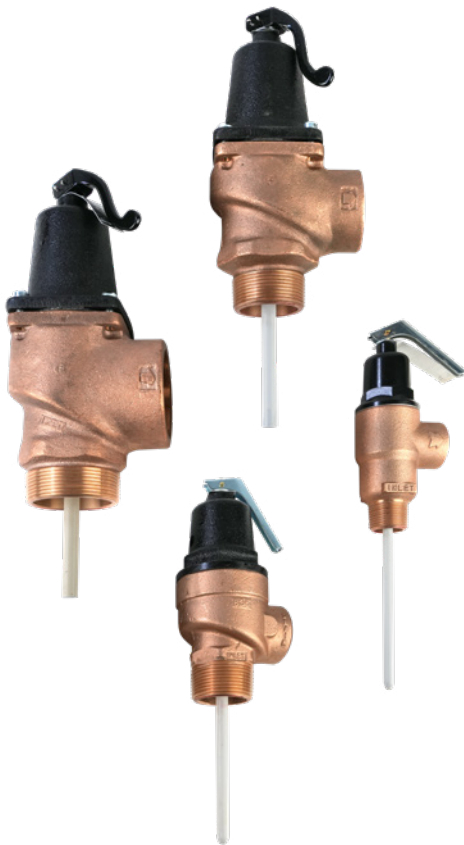
Discharges water to prevent cylinder damage from excess high temperature or pressure.

Reliance Valves FVMX Pressure & Temperature Relief Valves are high-capacity pressure and temperature relief valves suitable for domestic and larger commercial applications. The valve protects against over pressurisation or extreme temperatures over 95°C, which can occur within an unvented hot water system if the input temperature or pressure controls fail.

The valves are designed to be installed directly to the upper portions of a hot water cylinder, as this is where the hottest temperature is found. If the valve is opened, it will lift off its seat and release the water to the waste, reducing the pressure or temperature within the cylinder.

Features and benefits

- High capacity protection for domestic and commercial applications
- Protects against temperatures rising above 95°C
- Prevents over pressurisation
- Lever style easing mechanism
- Available in different connection sizes
- Suitable for hot water use only



SKU	Description	Model	Outlet size (mm)	BSP inlet size (inches)	BSP outlet size (inches)
PTEM600001	Pressure & Temperature Relief Valve	112mm probe preset at 7 bar	28	1	–
PTEM600002	Pressure & Temperature Relief Valve	120mm probe preset at 7 bar	–	1	1
PTEM600003	Pressure & Temperature Relief Valve	100mm probe preset at 7 bar	–	1 ¼	1
PTEM600004	Pressure & Temperature Relief Valve	80mm probe preset at 7 bar	–	1 ½	1 ½
PTEM600005	Pressure & Temperature Relief Valve	65mm probe preset at 7 bar	–	2	2

Accreditation:



Specialist Pressure & Temperature Relief Valve

A lever operated Pressure and Temperature Relief Valve available with an anti-vacuum valve to prevent cylinder implosion when draining down or when the mains pressure is interrupted.

Features and benefits

- Protects against temperatures rising above 95°C
- Lever top release mechanism
- Added flexibility for system configuration
- Includes an extra 15mm take-off point

SKU	Description	Model	Inlet size (mm)	BSP outlet size (inches)
PTEM200009	Pressure & Temperature Relief Valve	195mm probe preset at 7 bar	15mm	½

Accreditation:



Pressure Reducing Valves

You'll be reassured to know that all our pressure reducing valves are WRAS approved. This means that they have undergone independent third party testing, to ensure that they comply with the current UK water regulations for pressure reducing valves.

It also ensures that all materials used within the make-up of the valves have been verified as safe for potable water systems.

Our flow control valves and products enable building operators to accurately measure, monitor and adjust flow rates for optimum safety, enhanced economic performance and total peace of mind. Plus, ease of installation and simplicity of operation are built in as standard.



312 Compact Pressure Reducing Valve (Cold)

Compact pressure reducing valve for reducing high hot water pressure to a safer lower outlet pressure (adjustable between 1.5-6 bar up to 45°C).

Reliance Valves 312 Compact Series are a range of domestic pressure reducing valves that are adjustable between 1.5-6 bar up to 45°C. Specifically designed with compact efficiency in mind, all the working components are contained within one cartridge with two downstream test points at the base.

WRAS approved for domestic environments, the 312 Compact (Cold) PRV features a drop tight valve to control pressure. It can be installed in any orientation with gauge ports located on either side of the valve's base. Available with FBSP and MBSP unions, compression or JG Speedfit push-fit connections.

Features and benefits

- Drop tight valve controls the pressure under flow and no-flow conditions
- Single-piece replaceable cartridge containing all working parts
- Fully serviceable integral strainer to protect the seat of the valve
- Available in a variety of connection ends
- Gauge ports located on either side of valve base
- Suitable for cold water use only
- Union and compression version is suitable for copper pipe only
- JG Speedfit push-fit version is suitable for JG Speedfit PEX and polybutylene barrier pipe (inserts required) or copper pipe

SKU	Description	Model	Size (mm)	BSP size (inches)
PRED312001	Pressure Reducing Valve (Cold)	MBSP Union Connections, adjustable 1-6 bar	–	½
PRED312005	Pressure Reducing Valve (Cold)	MBSP Union Connections, adjustable 1-6 bar	–	¾
PRED312010	Pressure Reducing Valve (Cold)	Direct Compression	15	–
PRED312015	Pressure Reducing Valve (Cold)	Direct Compression	22	–
PRED312020	Pressure Reducing Valve (Cold)	Direct FBSP Connection	–	½
PRED312025	Pressure Reducing Valve (Cold)	Direct FBSP Connection	–	¾
PRED312066	Pressure Reducing Valve (Cold)	Direct Compression with Gauge	22	–
PRED312100	Pressure Reducing Valve (Cold)	JG Speedfit Connections	15	–
PRED312110	Pressure Reducing Valve (Cold)	JG Speedfit Connections	22	–

Accreditation:



312 Compact Pressure Reducing Valve (Hot)

Compact pressure reducing valve for reducing high hot water pressure to a safer lower outlet pressure (adjustable between 1.5-6 bar up to 80°C).

Reliance Valves 312 Compact Series are a range of domestic pressure reducing valves that are adjustable between 1.5-6 bar up to 80°C. Specifically designed with compact efficiency in mind, all the working components are contained within one cartridge with two downstream test points at the base.

WRAS approved for domestic environments, the 312 Compact (Hot) PRV features a drop tight valve to control pressure. It can be installed in any orientation with gauge ports located on either side of the valve's base.

Features and benefits

- Drop tight valve controls the pressure under flow and no-flow conditions
- Single-piece replaceable cartridge containing all working parts
- Fully serviceable integral strainer to protect the seat of the valve
- Available in a variety of connection ends
- Gauge ports located on either side of valve base
- Suitable for hot and cold water use only
- Compatible with copper pipe only

SKU	Description	Model	Size (mm)	BSP size (inches)
PRED312050	MBSP Pressure Reducing Valve (Hot)	MBSP Union Connections, adjustable 1-6 bar	–	½
PRED312055	MBSP Pressure Reducing Valve (Hot)	MBSP Union Connections, adjustable 1-6 bar	–	¾
PRED312060	15mm Pressure Reducing Valve (Hot)	Direct Compression	15	–
PRED312065	22mm Pressure Reducing Valve (Hot)	Direct Compression	22	–
PRED312070	FBSP Pressure Reducing Valve (Hot)	Direct FBSP Connection	–	½
PRED312071	FBSP Pressure Reducing Valve (Hot) with Gauge	Direct FBSP Connection with Gauge	–	½
PRED312075	FBSP Pressure Reducing Valve (Hot)	Direct FBSP Connection, adjustable 1-6 bar	–	¾
PRED312076	FBSP Pressure Reducing Valve (Hot) with Gauge	Direct FBSP Connection with Gauge	–	¾

Accreditation:



Easetet 320 Series (Cold) Pressure Reducing Valve

Compact pressure reducing valve for reducing high hot and cold water pressure to a safer lower outlet pressure (adjustable between 1-6 bar).

Reliance Valves Easetet 320 Series are a range of high-quality pressure reducing valves designed for domestic applications up to 16 bar and 45°C, with an easy-to-use ‘Lift & Turn’ adjustment mechanism.

The valve features a single gauge port on the base of the valve, as well as integrated drop tight valve to control the pressure under both flow and no-flow conditions.

All working components are contained in a one-piece cartridge and can be installed in any orientation for quick and easy installation. Available with MBSP connections with union fittings or SharkBite push-fit connections for fast and simple installation.

Features and benefits

- High flow rate design
- ‘Lift & Turn’ mechanism for easy tool-free pressure adjustment
- Single gauge port on the base of valve
- Fully serviceable strainer
- Drop tight valve controls pressure under flow and no-flow conditions
- One-piece cartridge can be installed in any orientation
- A variety of connection ends depending on installation needs
- Suitable for cold water use only
- MBSP connections with unions is suitable for copper pipe only
- The SharkBite push-fit version is suitable for JG Speedfit PEX and polybutylene barrier pipe (inserts required) or copper pipe



SKU	Description	Model	Size (mm)	BSP size (inches)
PRED320001	Pressure Reducing Valve (Cold)	Direct FBSP Connection	–	½
PRED320003	Pressure Reducing Valve (Cold)	MBSP Union Connections	–	½
PRED320005	Pressure Reducing Valve (Cold)	Direct FBSP Connection	–	¾
PRED320010	Pressure Reducing Valve (Cold)	Direct Compression	15	–
PRED320011	Pressure Reducing Valve (Cold)	MBSP Union Connections	–	¾
PRED320015	Pressure Reducing Valve (Cold)	Direct Compression	22	–
SBPRED320001	Pressure Reducing Valve (Cold)	SharkBite Connections	15	–
SBPRED320005	Pressure Reducing Valve (Cold)	SharkBite Connections	22	–

Accreditation:



Easetet 320 Series (Hot) Pressure Reducing Valve

Compact pressure reducing valve for reducing high hot and cold water pressure to a safer lower outlet pressure (adjustable between 1.5-6 bar).

Reliance Valves Easetet 320 Series are a range of high-quality pressure reducing valves designed for domestic applications up to 16 bar and 80°C, with an easy-to-use ‘Lift & Turn’ adjustment mechanism.

The valve features a single gauge port on the base of the valve, as well as integrated drop tight valve to control the pressure under both flow and no-flow conditions.

All working components are contained in a one-piece cartridge and can be installed in any orientation for quick and easy installation. Available with MBSP connections with union fittings or SharkBite push-fit connections for fast and simple installation.

Features and benefits

- High flow rate design
- ‘Lift & Turn’ mechanism for easy tool-free pressure adjustment
- Single gauge port on the base of valve
- Fully serviceable strainer
- Drop tight valve controls pressure under flow and no-flow conditions
- One-piece cartridge can be installed in any orientation
- A variety of connection ends depending on installation needs
- Suitable for hot and cold water use only
- MBSP connections with unions is suitable for copper pipe only
- The SharkBite push-fit version is suitable for JG Speedfit PEX and polybutylene barrier pipe (inserts required) or copper pipe



SKU	Description	Model	Size (mm)	BSP size (inches)
PRED320050	Pressure Reducing Valve (Hot)	Direct FBSP Connection	–	½
PRED320051	Pressure Reducing Valve (Hot)	MBSP Union Connections	–	½
PRED320055	Pressure Reducing Valve (Hot)	Direct FBSP Connection	–	¾
PRED320056	Pressure Reducing Valve (Hot)	MBSP Union Connections	–	¾
PRED320060	Pressure Reducing Valve (Hot)	Direct Compression	15	–
PRED320065	Pressure Reducing Valve (Hot)	Direct Compression	22	–
SBPRED320050	Pressure Reducing Valve (Hot)	SharkBite Connections	15	–
SBPRED320055	Pressure Reducing Valve (Hot)	SharkBite Connections	22	–

Accreditation:



314 Dial Up Pressure Reducing Valve

Compact dial-up pressure reducing valve for reducing high hot and cold water pressure to a safer lower outlet pressure (1.0 - 6.0 bar).

Reliance Valves 314 Dial-Up Series are a range of pressure reducing valves that are adjustable between 1.0 - 6.0 bar, with an easy-to-read pressure indicator dial.

Suitable for hot and cold water applications (up to 25 bar and 70°C), the 314 Dial-Up PRV uses a one-piece easy to replace cartridge containing all the PRV's working components. It also includes an integral strainer to protect the cartridge and the installation.

Available with MBSP connections with union fittings or FBSP when a direct connection is required. There is also a version featuring SharkBite push-fit connections for fast and simple installation.

Features and benefits

- One-piece easy to replace cartridge contains all working components
- Easy to read pressure indicator dial
- Integral strainer to protect the cartridge and the installation
- A variety of connection ends depending on installation needs
- Suitable for hot and cold water applications
- MBSP connections with unions is suitable for copper pipe only
- The SharkBite push-fit version is suitable for JG Speedfit PEX and polybutylene barrier pipe (inserts required) or copper pipe



SKU	Description	Model	Size (mm)	BSP size (inches)
PRED314001	314 Dial Up 1/2" FBSP Pressure Reducing Valve	Direct FBSP Connection	–	1/2
PRED314005	314 Dial Up 3/4" FBSP Pressure Reducing Valve	Direct FBSP Connection	–	3/4
PRED314010	314 Dial Up 1/2" MBSP Pressure Reducing Valve	MBSP Union Connections	–	1/2
PRED314015	314 Dial Up 3/4" MBSP Pressure Reducing Valve	MBSP Union Connections	–	3/4
	314 Dial-Up 15mm Pressure Reducing Valve with SharkBite Connections	SharkBite Connections	15	–
SBPRED314005	314 Dial-Up 22mm Pressure Reducing Valve with SharkBite Connections	SharkBite Connections	22	–

Accreditation:



315i Commercial Pressure Reducing Valve

Commercial pressure reducing valve for reducing high hot and cold water pressure to a safer lower outlet pressure.

Reliance Valves 315i Commercial Series are a range of adjustable pressure reducing valves that are adjustable between 1.5 – 6 bar, with an easy-to-read pressure indicator dial.

Suitable for hot and cold water applications (up to 25 bar and 70°C), all working components are contained in a one-piece cartridge making it easy to replace the cartridge for maintenance. It also features an integral strainer to protect the cartridge and the installation.

Ideal for high pressure systems, the 315i Commercial Series comes with MBSP or capillary connections with unions for quick and easy installation, or FBSP or compression connections for a direct connection to the valve.

Features and benefits

- Easy to read pressure indicator
- Drop tight valve controls pressure under flow and no-flow condition
- Robust design can be installed in any orientation
- One-piece easy to replace cartridge containing all parts
- Fully serviceable integral strainer
- Suitable for hot and cold water up to 25 bar
- Compatible with copper pipe only



SKU	Description	Model	Size (mm)	BSP size (inches)
PRED315010	Pressure Reducing Valve	MBSP Union Connections, adjustable 1.5-6 bar	–	1/2
PRED315020	Pressure Reducing Valve	MBSP Union Connections, adjustable 1.5-6 bar	–	3/4
PRED315030	Pressure Reducing Valve	MBSP Union Connections	–	1
PRED315040	Pressure Reducing Valve	MBSP Union Connections	–	1 1/4
PRED315050	Pressure Reducing Valve	MBSP Union Connections	–	1 1/2
PRED315060	Pressure Reducing Valve	MBSP Union Connections	–	2
PRED315070	Pressure Reducing Valve	Capillary, adjustable 1.5-6 bar	15	–
PRED315080	Pressure Reducing Valve	Capillary, adjustable 1.5-6 bar	22	–
PRED315090	Pressure Reducing Valve	Capillary, adjustable 1.5-6 bar	28	–
PRED315110	Pressure Reducing Valve	Direct Compression, adjustable 1.5-6 bar	28	–
PRED315120	Pressure Reducing Valve	Adjustable 5-10 bar	–	1 1/4
PRED315125	Pressure Reducing Valve	Adjustable 5-10 bar	–	1 1/2
PRED315130	Pressure Reducing Valve	Adjustable 5-10 bar	–	2

Accreditation:



312 OEM Series

A range of compact pressure reducing valves which can be easily installed into small areas in any orientation.

Features and benefits

- Integral strainer
- Available with or without balanced cold water take-off
- One-piece cartridge
- Drop tight valve – controls the pressure under both flow and no-flow conditions

SKU	Description	Model	Size (mm)
PRED330616	Compact Pressure Reducing Valve	Preset and locked 3.5 bar	15
PRED330000	Compact Pressure Reducing Valve	Preset and locked 2.1 bar	22
PRED330001	Compact Pressure Reducing Valve	Preset and locked 3 bar	22
PRED330002	Compact Pressure Reducing Valve	Preset and locked 3.5 bar	22
PRED330005	Compact Pressure Reducing Valve	Preset and locked 3 bar with balanced cold water take-off	22
PRED330006	Compact Pressure Reducing Valve	Preset and locked 3.5 bar with balanced cold water take-off	22

Accreditation:



Predator Pressure Reducing Valve

Pressure reducing valve for reducing high hot and cold water pressure to a safer lower outlet pressure (adjustable between 1-6 bar).

Reliance Valves Predator Pressure Reducing Valves are used in water systems to reduce the pressure running through the system. Reducing the pressure from the mains water supply helps to reduce water wastage and energy consumption.

Predator is designed for use at temperatures up to 80°C and is adjustable between 1 – 6 bar. It also features a drop-tight valve to control the pressure more accurately, a fully serviceable integral strainer to protect the seat of the valve, as well as a pressure gauge and gauge port plug.

Features and benefits

- Drop tight valve controls pressure under flow and no-flow conditions
- Fully serviceable integral strainer protects the seat of the valve
- Install in any orientation, providing full installation flexibility
- Pressure gauge and gauge port plug
- Suitable for hot and cold water use only
- Compatible with copper pipe only

SKU	Description	Model	Size (mm)
PRED800015	Predator Pressure Reducing Valve	15mm Direct Compression	15
PRED800020	Predator Pressure Reducing Valve	22mm Direct Compression	22

Accreditation:



Pressure Gauges

Pressure gauges for a wide range of orientations.

Reliance Valves Pressure Gauges are available in a wide range to suit a variety of applications and pressure ranges.

All pressure gauges are PSI and BAR registered and are available with back inlets, bottom inlets or top inlets to suit any installation method required. The range also features a high pressure indicator to show the highest pressure the gauge can register.

Features and benefits

- A wide range of pressure gauges to suit all applications
- High pressure indicator shows the highest pressure the gauge registers
- PSI and BAR registered
- Suitable for hot and cold water use only
- For use with Reliance Valves Pressure Reducing Valves range



SKU	Description	Model	Size (inches)
GAGE250017	Pressure Gauges	MBSP back inlet, 40mm dial up to 10 bar	¼
GAGE250007	Pressure Gauges	MBSP back inlet, 50mm dial up to 4 bar	¼
GAGE250001	Pressure Gauges	MBSP back inlet, 50mm dial up to 6 bar	¼
GAGE250006	Pressure Gauges	MBSP back inlet, 50mm dial up to 16 bar	¼
GAGE250003	Pressure Gauges	MBSP back inlet, 63mm dial up to 4 bar	¼
GAGE250002	Pressure Gauges	MBSP back inlet, 63mm dial up to 6 bar	¼
GAGE250005	Pressure Gauges	MBSP back inlet, 63mm dial up to 10 bar	¼
GAGE250004	Temperature Gauges	MBSP centre back inlet, 50mm dial up to 16 bar	¼
GAGE250010	Temperature Gauges	MBSP, 100mm up to 120°C	½
GAGE250016	Pressure Gauges	MBSP top inlet, 50mm dial up to 6 bar	¼
GAGE250008	Pressure Gauges	MBSP bottom inlet, 63mm dial up to 6 bar	¼
GAGE250009	Pressure Gauges	MBSP bottom inlet, 63mm dial up to 4 bar	¼

Replacement One Piece Pressure Reducing Valve Cartridges

Replacement one-piece cartridges for Reliance Valves Pressure Reducing Valves.

Replacement one piece cartridges for use with Reliance Valves pressure reducing valve range. The one-piece design makes replacement quick and easy. Each cartridge is adjustable and comes complete with an integral cylindrical strainer.

Features and benefits

- One-piece cartridge
- Easy to replace and commission
- Integral strainer
- For use with Reliance Valves Pressure Reducing Valves range

SKU	Description	Model	Size (inches)
REDC312010	One piece cartridge	312 Compact Cold Water	½ & ¾
REDC312015	One piece cartridge	312 Compact Hot Water	½ & ¾
REDC315010	One piece cartridge	315i	½ & ¾
REDC315020	One piece cartridge	315i	1
REDC315030	One piece cartridge	315i	1 ¼ & 1 ½
REDC315035	One piece cartridge	315i	2
REDC315100	One piece cartridge	315i	1
REDC320001	One piece cartridge	320, 45°C	½ & ¾
REDC320002	One piece cartridge	320, 80°C	½ & ¾
REDC320005	One piece cartridge	320, 3 bar	–
REDC320010	One piece cartridge	320, 3.5 bar	–
REDC355030	One piece cartridge	312 OEM – preset 3 bar	–
REDC355040	One piece cartridge	330 OEM – preset 2 bar	–
REDC355045	One piece cartridge	330 OEM – preset 2.1 bar	–
REDC355050	One piece cartridge	330 OEM – preset 1.5 bar	–
REDC355055	One piece cartridge	330 OEM – preset 1.8 bar	–
REDC355070	One piece cartridge	330 OEM – preset 3.5 bar	–



Pressure Relief Valves

Reliance Valves Pressure Relief Valves safely and reliably limit the pressure in a system to prevent over pressurisation and subsequent damage.

Our extensive range includes valves that are suitable for domestic and commercial heating systems and potable water systems.

Available in a variety of sizes and pressure ranges, our pressure relief valves come with a variety of options, from high-capacity valves to single-piece cartridges for easy servicing and maintenance.



102 Series Potable Water Pressure Relief Valve

Discharges water off the system at a set pressure in the event of cold water over pressurisation to a unvented cylinder.

Reliance Valves 102 Series Potable Water Pressure Relief Valves are designed to protect an unvented system from over pressurisation. The valves are pre-set and locked to a particular pressure, and if the system exceeds this pressure, the valve will lift off the seat and water will discharge from the valve to the waste. This is the first safety device in line within an unvented system.

The pressure relief valves are designed with a single piece cartridge and are available in different pressures ranging from 3.5-8 bar, as well as multiple connection sizes to allow for flexible installation.

Features and benefits

- Rapid removal of single-piece cartridge for cleaning or replacement
- Diaphragm design gives improved resistance against scale
- Protects against over pressurisation
- Multiple connections for flexible installation
- Set relief pressure range from 3.5-8 bar
- Suitable for cold water use only

SKU	Description	Model	Outlet size (mm)	BSP inlet size (inches)	BSP outlet size (inches)
PREL102001	Pressure Relief Valve	Female connections, preset at 6 bar	—	½	½
PREL102003	Pressure Relief Valve	Male × compression connections, preset at 5 bar	15	½	—
PREL102004	Pressure Relief Valve	Female connections, preset at 8 bar	—	½	½
PREL102005	Pressure Relief Valve	Male × compression connections, preset at 6 bar	15	½	—
PREL102008	Pressure Relief Valve	Female connections, preset at 5 bar	—	½	½
PREL102009	Pressure Relief Valve	Male × compression connections, preset at 3.5 bar	15	½	—
PREL102014	Pressure Relief Valve	Female connections, preset at 3.5 bar	—	½	½
PREL102018	Pressure Relief Valve	Male × Female connections, preset at 6 bar	—	¾	¾
PREL102020	Pressure Relief Valve	Male × compression connections, preset at 3.5 bar	22	¾	—
PREL102024	Pressure Relief Valve	Male × Female connections, preset at 8 bar	—	¾	¾
PREL102027	Pressure Relief Valve	Male × compression connections, preset at 6 bar	22	¾	—
PREL102031	Pressure Relief Valve	Female connections, preset at 6 bar	—	¾	¾
PREL102040	Pressure Relief Valve	Male × Female connections, preset at 3.5 bar	—	½	½
PREL102041	Pressure Relief Valve	Male × Female connections, preset at 5 bar	—	½	½
PREL102042	Pressure Relief Valve	Male × Female connections, preset at 6 bar	—	½	½
PREL102043	Pressure Relief Valve	Male × Female connections, preset at 8 bar	—	½	½
PREL102044	Pressure Relief Valve	Male × compression connections, preset at 8 bar	15	½	—
PREL102045	Pressure Relief Valve	Female connections, preset at 3.5 bar	—	¾	¾
PREL102046	Pressure Relief Valve	Female connections, preset at 5 bar	—	¾	¾
PREL102047	Pressure Relief Valve	Female connections, preset at 8 bar	—	¾	¾
PREL102048	Pressure Relief Valve	Male × Female connections, preset at 3.5 bar	—	¾	¾
PREL102049	Pressure Relief Valve	Male × compression connections, preset at 5 bar	22	¾	—
PREL102050	Pressure Relief Valve	Male × compression connections, preset at 8 bar	22	¾	—
PREL102118	Pressure Relief Valve	Male × Female connections, preset at 5 bar	—	¾	¾

Accreditation:



104 Series High Capacity Potable Water Pressure Relief Valve

Discharges water off the system at a set pressure in the event of cold water over pressurisation to an unvented cylinder (high flow for larger capacity systems).

Reliance Valves 104 Series High Capacity Potable Water Pressure Relief Valve is a high capacity range of pressure relief valves designed to protect an unvented system from over pressurisation. The valves are pre-set and locked to a particular pressure, and if the system exceeds this pressure the valve will lift off the seat and water will discharge from the valve to the waste.

The outlet connection is one size larger than the inlet to guarantee the valve will be able to cope with a high capacity discharge. This is the first safety device in line within an unvented system. The valves are available in different pressures ranging from 3.5-8 bar, as well as multiple connection sizes to allow for flexible installation.

Features and benefits

- High flow design for larger capacity systems
- Rapid removal of single piece cartridge for cleaning or replacement
- Diaphragm design gives improved resistance against scale
- Protects against over pressurisation
- Multiple connections for flexible installation
- Set relief pressure range from 3.5-8 bar
- Suitable for cold water use only



SKU	Description	Model	BSP inlet size (inches)	BSP outlet size (inches)
PREL104001	Pressure Relief Valve	Female connections preset at 5 bar	1	1 ¼
PREL104002	Pressure Relief Valve	Female connections preset at 6 bar	1	1 ¼
PREL104005	Pressure Relief Valve	Female connections preset at 6 bar	1 ¼	1 ½
PREL104010	Pressure Relief Valve	Female connections preset at 6 bar	¾	1
PREL104012	Pressure Relief Valve	Female connections preset at 6 bar	1 ½	2
PREL104013	Pressure Relief Valve	Female connections preset at 8 bar	1 ¼	1 ½
PREL104014	Pressure Relief Valve	Female connections preset at 5 bar	¾	1
PREL104015	Pressure Relief Valve	Female connections preset at 6 bar	2	2 ½
PREL104016	Pressure Relief Valve	Female connections preset at 8 bar	¾	1
PREL104017	Pressure Relief Valve	Female connections preset at 8 bar	1	1 ¼
PREL104020	Pressure Relief Valve	Female connections preset at 8 bar	1 ½	2
PREL104023	Pressure Relief Valve	Female connections preset at 8 bar	2	2 ½
PREL104042	Pressure Relief Valve	Female connections preset at 3.5 bar	¾	1
PREL104043	Pressure Relief Valve	Female connections preset at 3.5 bar	1	1 ¼
PREL104044	Pressure Relief Valve	Female connections preset at 3.5 bar	1 ¼	1 ½
PREL104045	Pressure Relief Valve	Female connections preset at 5 bar	1 ¼	1 ½
PREL104047	Pressure Relief Valve	Female connections preset at 5 bar	1 ½	2
PREL104048	Pressure Relief Valve	Female connections preset at 3.5 bar	2	2 ½
PREL104049	Pressure Relief Valve	Female connections preset at 5 bar	2	2 ½

107 Series Potable Water Pressure Relief Valve

Discharges water off the system at a set pressure in the event of cold water over pressurisation to a unvented cylinder.

Reliance Valves 107 Series Potable Water Pressure Relief Valve is designed to protect an unvented system from over pressurisation. The valves are pre-set and locked to a particular pressure, and if the system exceeds this pressure the valve will lift off the seat and water will discharge from the valve to the waste.

This is the first safety device in line within an unvented system. The valves are available in pressures ranging from 3.5 – 6 bar, as well as multiple connection sizes to allow for flexible installation.

Features and benefits

- Diaphragm design gives improved resistance against scale
- Protects against over pressurisation
- Multiple connections for flexible installation
- Set relief pressure range from 3.5-6 bar
- Suitable for cold water use only



SKU	Description	Model	Outlet size (mm)	BSP inlet size (inches)	BSP outlet size (inches)
PREL107010	Pressure Relief Valve	Female connections, preset at 6 bar	–	½	½
PREL107015	Pressure Relief Valve	Male × female connections, preset at 6 bar	–	½	½
PREL107020	Pressure Relief Valve	Male × female connections, preset at 8 bar	15	½	–

Accreditation:



100 Series High Capacity Sealed Heating System Pressure Relief Valve

Discharges water off the system at a set pressure in the event of system over pressurisation (high for larger capacity systems).

Reliance Valves 100 Series Pressure Relief Valves are made from hot pressed brass and are predominantly used to protect closed-circuit wet heating systems from overpressure. The outlet is one size larger than the inlet to ensure high discharge flow rates.

It has a separate seal seating from the diaphragm to give improved scaling resistance and a cover which is made from OT58 brass. Available in a variety of sizes to suit most installations, it also has a pressure range from 2.5-5 bar, with the response pressure indicated on the twist cap. The valve size is determined by the heat output of the boiler as shown in the maximum heating capacity table.

Features and benefits

- High flow design for larger capacity systems
- Outlet is one size larger than the inlet for high capacity discharge
- Provides protection against over pressurisation in wet heating systems
- Diaphragm design gives improved resistance against scale
- Cartridge design gives ease of service and replacement without the need to reset the response pressure
- Set pressure range from 2.5-5 bar to suit any system requirement
- High lift design for increased discharge capacity
- Suitable for heating applications only

SKU	Description	Model	BSP inlet size (inches)	BSP outlet size (inches)
PREL100001	Pressure Relief Valve	Female connections, preset at 3 bar	½	¾
PREL100003	Pressure Relief Valve	Female connections, preset at 4 bar	½	¾
PREL100004	Pressure Relief Valve	Female connections, preset at 5 bar	½	¾
PREL100008	Pressure Relief Valve	Female connections, preset at 2.5 bar	½	¾
PREL100013	Pressure Relief Valve	Female connections, preset at 2.5 bar	¾	1
PREL100014	Pressure Relief Valve	Female connections, preset at 3 bar	¾	1
PREL100016	Pressure Relief Valve	Female connections, preset at 4 bar	¾	1
PREL100022	Pressure Relief Valve	Female connections, preset at 2.5 bar	1	1 ¼
PREL100023	Pressure Relief Valve	Female connections, preset at 3 bar	1	1 ¼
PREL100025	Pressure Relief Valve	Female connections, preset at 4 bar	1	1 ¼
PREL100027	Pressure Relief Valve	Female connections, preset at 5 bar	1	1 ¼
PREL100028	Pressure Relief Valve	Female connections, preset at 5 bar	¾	1
PREL100032	Pressure Relief Valve	Female connections, preset at 2.5 bar	1 ¼	1 ¼
PREL100033	Pressure Relief Valve	Female connections, preset at 3 bar	1 ¼	1 ¼
PREL100034	Pressure Relief Valve	Female connections, preset at 4 bar	1 ¼	1 ¼
PREL100036	Pressure Relief Valve	Female connections, preset at 5 bar	1 ¼	1 ¼
PREL100041	Pressure Relief Valve	Female connections, preset at 3 bar	1 ½	2
PREL100042	Pressure Relief Valve	Female connections, preset at 4 bar	1 ½	2
PREL100044	Pressure Relief Valve	Female connections, preset at 2.5 bar	1 ½	2
PREL100046	Pressure Relief Valve	Female connections, preset at 5 bar	1 ½	2
PREL100049	Pressure Relief Valve	Female connections, preset at 3 bar	2	2 ½
PREL100050	Pressure Relief Valve	Female connections, preset at 4 bar	2	2 ½
PREL100052	Pressure Relief Valve	Female connections, preset at 2.5 bar	2	2 ½
PREL100055	Pressure Relief Valve	Female connections, preset at 5 bar	2	2 ½



101 Series Sealed Heating System Pressure Relief Valve

Discharges water off the system at a set pressure in the event of heating system over pressurisation.

Reliance Valves 101 Series Sealed Heating System Pressure Relief Valves are most commonly used as a safety mechanism within sealed heating systems.

The pressure relief valve is set to the correct pressure upon installation. When the pressure rises within the system and the set pressure is reached, the pressure release valve opens and discharges into the atmosphere. This prevents the pressure within the system from reaching dangerous levels that could damage the system and be harmful to anyone in the immediate vicinity.

Features and benefits

- Diaphragm design gives improved resistance to scaling and extends lifespan
- Straightforward removal of single-piece cartridge allows access to seat for cleaning or cartridge replacement
- Set relief pressure range from 2 bar-3 bar gives flexibility of system design
- Available with FSBP or MBSP/FBSP connections for complete installation flexibility
- Suitable for heating applications only

SKU	Description	Model	BSP inlet size (inches)	BSP outlet size (inches)
PREL101001	Pressure Relief Valve	Female connections, preset at 2 bar	½	½
PREL101002	Pressure Relief Valve	Female connections, preset at 2.5 bar	½	½
PREL101003	Pressure Relief Valve	Female connections, preset at 3 bar	½	½
PREL101011	Pressure Relief Valve	Female connections, preset at 2 bar	¾	¾
PREL101012	Pressure Relief Valve	Female connections, preset at 2.5 bar	¾	¾
PREL101013	Pressure Relief Valve	Female connections, preset at 3 bar	¾	¾
PREL101014	Pressure Relief Valve	Male × female connections, preset at 2 bar	¾	¾
PREL101015	Pressure Relief Valve	Male × female connections, preset at 2 bar	½	½
PREL101016	Pressure Relief Valve	Male × female connections, preset at 3 bar	½	½
PREL101023	Pressure Relief Valve	Male × female connections, preset at 3 bar	¾	¾
PREL101024	Pressure Relief Valve	Male × female connections, preset at 2.5 bar	½	½



Pressure Relief Valve Cartridges

Replacement cartridge for Reliance Valves Pressure Relief Valves.

Reliance Valves Pressure Relief Valve Cartridges are replacement single-piece cartridges suitable for most Reliance Valves unit relief valves and combination valves. Fast and simple to install, the cartridge features a hardwearing EPDM boot suitable for high system temperatures.

Features and benefits

- Hard wearing EPDM boot safely seals the cartridge once fitted to the valve body
- For use with Reliance Valves heating pressure relief valves
- Suitable for central heating only

SKU	Description	Model	Valve size (inches)
ZRC209020	Heating Pressure Relief Valve cartridge	Preset at 2 bar	½ & ¾
ZRC209021	Heating Pressure Relief Valve cartridge	Preset at 2.5 bar	½ & ¾
ZRC214004	Potable Pressure Relief Valve cartridge	Preset at 6 bar	½ & ¾
ZRC214009	Potable Pressure Relief Valve cartridge	Preset at 8 bar	½ & ¾
ZRC214031	Potable Pressure Relief Valve cartridge	Preset at 3.5 bar	½ & ¾
ZRC214043	Heating Pressure Relief Valve cartridge	Preset at 3 bar	½ & ¾
ZRC214048	Potable Pressure Relief Valve cartridge	Preset at 5 bar	½ & ¾



Expansion Vessels

Reliance Valves Expansion Vessels ensure safe operating levels by preventing pressure from building up in sealed heating systems and cold water systems.

Our Aquasystem range features replaceable membranes to allow quick and easy servicing in situ. It also prevents water from coming into contact with the shell, eliminating corrosion and extending product lifespan.

Available from 2 to 5,000 litre capacity, our expansion vessels are suitable for both domestic and commercial applications. The range also includes replacement membranes and expansion vessel fixing kits for fast and simple installation.



Potable Expansion Vessels

Stainless steel expansion vessel for potable water applications

Reliance Valves Aquasystem Replaceable Membrane Potable Water Expansion Vessels are designed to carry the extra load within a water system when the water is heating and increasing in volume.

The vessels have a replaceable membrane inside that prevents the water from causing corrosion or contamination, ensuring the water remains safe for human consumption. This replaceable membrane also means that the vessel can be easily serviced without having to be removed.

SKU	Description	Model	Pre-set pressure (Bar)	Max pressure (Bar)	Connection Size
XVES050010	Potable Vessel	2L Capacity – White	3.0	10	1/2" MBSP
XVES050020	Potable Vessel	5L Capacity – White	3.0	10	3/4" MBSP
XVES050030	Potable Vessel	8L Capacity – White	3.0	10	3/4" MBSP
XVES050036	Potable Vessel	8L Capacity – White with Bracket	3.5	10	3/4" MBSP
XVES050040	Potable Vessel	12L Capacity – White	3.0	10	3/4" MBSP
XVES050045	Potable Vessel	12L Capacity – White with Bracket	3.5	10	3/4" MBSP
XVES050050	Potable Vessel	18L Capacity – White	3.0	10	3/4" MBSP
XVES050055	Potable Vessel	18L Capacity – White with Bracket	3.5	10	3/4" MBSP
XVES050060	Potable Vessel	24L Capacity – White	3.0	10	3/4" MBSP
XVES050065	Potable Vessel	24L Capacity – White with Bracket	3.5	10	3/4" MBSP
XVES050070	Potable Vessel	35L Capacity – White	3.0	10	3/4" MBSP
XVES050075	Potable Vessel	35L Capacity – White with Bracket	3.5	10	3/4" MBSP
XVES050080	Potable Vessel	50L Capacity – Blue	3.0	10	3/4" MBSP
XVES050090	Potable Vessel	60L Capacity – Blue	3.5	10	1" MBSP
XVES050100	Potable Vessel	80L Capacity – Blue	3.5	10	1" MBSP
XVES050110	Potable Vessel	100L Capacity – Blue	3.5	10	1" MBSP
XVES050120	Potable Vessel	150L Capacity – Blue	3.5	10	1" MBSP
XVES050130	Potable Vessel	200L Capacity – Blue	3.5	10	1 1/4" MBSP
XVES050140	Potable Vessel	300L Capacity – Blue	3.5	10	1 1/4" MBSP
XVES050150	Potable Vessel	500L Capacity – Blue	3.5	10	1 1/4" MBSP
XVES050160	Potable Vessel	750L Capacity – Red	4.0	10	2" MBSP
XVES050170	Potable Vessel	1000L Capacity – Red	4.5	10	2" MBSP
XVES050180	Potable Vessel	1500L Capacity – Red	4.5	10	2" MBSP
XVES050190	Potable Vessel	2000L Capacity – Red	4.5	10	2" MBSP
XVES050200	Potable Vessel	3000L Capacity – Red	4.5	10	DN65
XVES050210	Potable Vessel	4000L Capacity – Red	4.5	10	DN80
XVES050220	Potable Vessel	5000L Capacity – Red	4.5	10	DN80



Heating Expansion Vessels

Stainless steel expansion vessel for heating applications.

Reliance Valves Aquasystem Heating Expansion Vessels are available from 2 litres to 1,000 litres capacity with maximum pressure bar ranging from 8-10.

Designed with replaceable membranes, the Aquasystem range allows servicing in situ, preventing water contact with the steel expansion vessel shell to prevent internal corrosion and to extend life.

- Features and benefits**
- Stainless steel bolted flange prevents corrosion
 - Extra wide membrane opening prevents noise caused by restricted flow
 - Internal membrane prevents any water contact with the steel shell, stopping internal corrosion
 - A wide range from 5 to 1,000 litres, covering all applications
 - All versions supplied with a replaceable membrane so that the vessel can be serviced without being removed
 - Pre-charge valve for topping up air pressure
 - Suitable for heating applications only

SKU	Description	Model	Pre-Set Pressure (Bar)	Max Pressure (Bar)	Connection Size
XVES100010	Heating Vessel	2L Capacity – Red	1.0	10	1/2" MBSP
XVES100020	Heating Vessel	5L Capacity – Red	1.0	8	3/4" MBSP
XVES100030	Heating Vessel	8L Capacity – Red	1.0	8	3/4" MBSP
XVES100035	Heating Vessel	8L Capacity – Red with bracket	1.0	8	3/4" MBSP
XVES100040	Heating Vessel	12L Capacity – Red	1.0	8	3/4" MBSP
XVES100045	Heating Vessel	12L Capacity – Red with bracket	1.0	8	3/4" MBSP
XVES100050	Heating Vessel	18L Capacity – Red	1.5	8	3/4" MBSP
XVES100055	Heating Vessel	18L Capacity – Red with bracket	1.5	8	3/4" MBSP
XVES100060	Heating Vessel	24L Capacity – Red	1.5	8	3/4" MBSP
XVES100065	Heating Vessel	24L Capacity – Red with bracket	1.5	8	3/4" MBSP
XVES100070	Heating Vessel	35L Capacity – Red	1.5	8	3/4" MBSP
XVES100075	Heating Vessel	35L Capacity – Red with bracket	1.5	8	3/4" MBSP
XVES100080	Heating Vessel	50L Capacity – Red	1.5	8	3/4" MBSP
XVES100090	Heating Vessel	80L Capacity – Red	1.5	8	1" MBSP
XVES100100	Heating Vessel	100L Capacity – Red	1.5	8	1" MBSP
XVES100110	Heating Vessel	150L Capacity – Red	1.5	8	1" MBSP
XVES100120	Heating Vessel	200L Capacity – Red	1.5	8	1" MBSP
XVES100130	Heating Vessel	250L Capacity – Red	1.5	8	1" MBSP
XVES100140	Heating Vessel	300L Capacity – Red	1.5	8	1" MBSP
XVES100150	Heating Vessel	500L Capacity – Red	1.5	8	1 1/4" MBSP
XVES100160	Heating Vessel	750L Capacity – Red	4.0	8	2" MBSP
XVES100170	Heating Vessel	1000L Capacity – Red	4.0	8	2" MBSP



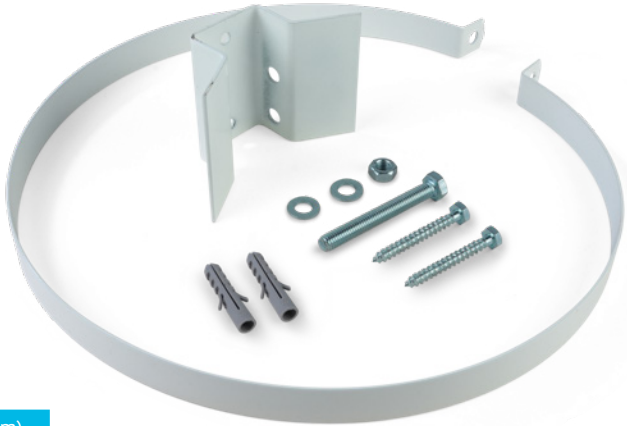
Expansion Vessel Fixing Kit

Support bracket for Reliance Valves expansion vessels

Reliance Valves Vessel Brackets safely and securely fix potable or heating expansion vessels and comes with bolts, screws and wall plugs.

Features and benefits

- Complete with fixings
- Includes bolts, screws and wall plugs
- Suitable for Reliance Valves Expansion Vessels



SKU	Description	Model	Outlet size (mm)
BRKT240021	MK2 Vessel Fixing Kit	For 5 litre vessels	160
BRKT240022	MK2 Vessel Fixing Kit	For 8 litre vessels	200
BRKT240050	MK2 Vessel Fixing Kit	For 12, 18 or 24 litre vessels	280
BRKT240051	MK2 Vessel Fixing Kit	For 35 or 50 litre vessels	365

Replacement Expansion Vessel Membranes

Replacement membrane for Aquasystem Heating and Potable expansion vessels.

Reliance Valves Aquasystem Replacement Vessel Membranes are available from 2 to 5,000 litre capacity, which allows the vessel to be serviced in situ and prevents any water contact with the steel shell to prevent internal corrosion.

These replacement membranes are quick and easy to install and can be used with all Aquasystem replaceable membrane potable and heating expansion vessels.

Features and benefits

- Available in 2-5,000 litre sizes
- Specific membranes for hot or potable water vessel



SKU	Description	Model
MEMB100000	Potable Membrane	2 litre
MEMB100010	Potable Membrane	5-8 litre
MEMB100020	Potable Membrane	12 litre
MEMB100030	Potable Membrane	18 litre
MEMB100040	Potable Membrane	24 litre
MEMB100055	Potable Membrane	50 litre
MEMB100060	Potable Membrane	60 litre
MEMB100065	Potable Membrane	80 litre
MEMB100070	Potable Membrane	100 litre
MEMB100080	Potable Membrane	150 litre
MEMB100090	Potable Membrane	200 litre
MEMB100100	Potable Membrane	300 litre
MEMB100110	Potable Membrane	500 litre
MEMB200010	Heating Membrane	5-8 litre
MEMB200020	Heating Membrane	12 litre
MEMB200030	Heating Membrane	18 litre
MEMB200040	Heating Membrane	24 litre
MEMB200055	Heating Membrane	50 litre
MEMB200060	Heating Membrane	80 litre
MEMB200070	Heating Membrane	100 litre
MEMB200075	Heating Membrane	150 litre
MEMB200080	Heating Membrane	200, 250 or 300 litre
MEMB200090	Heating Membrane	400 or 500 litre
MEMB200120	Potable Heating Membrane	750 litre
MEMB200125	Potable Heating Membrane	1,000 litre
MEMB200130	Potable Heating Membrane	1,500 or 2,000 litre
MEMB200140	Potable Heating Membrane	3,000 to 5,000 litre

Potable Water Shock Arrestor

Compact mini vessel to eliminate the noise created by water hammer.

Reliance Valves Potable Water Shock Arrestor is a compact mini vessel designed to be fitted close to an appliance or fixture to eliminate the noise created by water hammer.

Water hammer is caused during a pressure surge within a potable water system. The hammer is caused by a sudden stop or change of water flow within the system and is extremely common in domestic plumbing. Water hammer usually happens when the pressure within the system is too high. Our shock arrestor can be fitted at the point of use to prevent water hammer within the system.

Features and benefits

- Stainless steel shell and flange to prevent corrosion
- Pre-charge valve for topping up air pressure
- 0.16 litre arrestor also available with a SharkBite push-fit connector or SharkBite push-fit tee
- Suitable for hot and cold water use only



SKU	Description	Model
XVES050000	Shock Arrestor	0.16 litre, preset at 5 bar
XVES050005	Shock Arrestor	0.5 litre , preset at 5 bar
XVES050006	Shock Arrestor	1 litre, preset at 5 bar
XVES050007	Shock Arrestor	2 litre, preset at 5 bar

Accreditation:



Bespoke Kits

Reliance Valves manufacture, source and package key components required for unvented hot water systems to supply the complete solutions.

Over the years the kits have become highly customised to include not only the standard legally required parts, but also specific components and accessories for individual customers.



G3 Unvented Kits

G3 Unvented Kits contain all the safety or functional components required for an unvented hot water cylinder in accordance with Part G of The Building Regulations 2010.

We also offer bespoke solutions, allowing you to have your own unique branded G3 kit, which could include company logos, special boxes, personalised labels and instructions or branded product.

Features and benefits

- Contains an inlet control valve, expansion vessel, and tundish
- Indirect kits also include a zone valve and dual thermostat
- Supplied in one complete box to save separate components being sourced
- Optional extras available, including flexible hoses, nuts & olives, single control thermostat and single high-limit thermostat
- WRAS approved components



Easifit Water Heater Kits

Control and safety valve kit for water heaters.

Reliance Valves Easifit Water Heater Kits are a selection of components designed to prevent over pressurisation of water heaters. An unvented kit is recommended for small water heater installations where it is not possible to accommodate the system expansion within the pipework.

Each kit has been developed to meet a variety of safety levels required by different applications.

All kits include a 2 litre heating vessel that is compliant with G3 Building Regulations and WRAS approved components: pressure reducing valves, check valves, relief valves and inlet control valves.

Contact our team to discuss your specific requirements.

Features and benefits

- Contains all required controls to install a small water heater
- Mix of controls available for flexibility of design
- High quality materials
- Complies with G3 Building Regulations
- WRAS approved components
- Suitable for hot and cold water only
- WRAS approved components



Heating System Components

Our heating system components are designed to maintain system balance with precision and to always ensure safe operating conditions.

The range includes Anti-Legionella Valves, Differential By-Pass Valves and Air Vents, as well as convenient Sealed Heating System Kits for new or converted systems.



Easifit® Sealed System Kit

G3 compliant sealed heating system kit including vessel, pressure relief valve, gauge and filling loop.

Reliance Valves Easifit Sealed System Kit uses a multibloc system, utilising proven technology in a modular easy to use format. It is designed to make the initial installation process of a sealed system or conversion of a conventional vented heating system to a sealed system as simple as possible.

The Easifit Sealed System Expansion Vessel Kit includes an expansion vessel with integrated bracket system, a WRAS approved filling loop with blanking caps, an easy to read pressure gauge and a one-piece connection manifold that requires no assembly.

Features and benefits

- Includes an expansion vessel with integrated bracket system for ease of installation
- The connection manifold is a one-piece unit and requires no assembly
- Includes a WRAS approved filling loop with blanking caps
- Easy to read pressure gauge
- Union type connection to the expansion vessel can be easily orientated
- Suitable for heating applications only

SKU	Description	Size (inches)
EAS1209104	Easifit® with filling loop and gauge	¾" MBSP



FBSP Anti-Legionella Valve

Prevents legionella bacteria from contaminating stored cold water within an expansion vessel.

Reliance Valves Anti-Legionella Valve prevents legionella bacteria from contaminating stored cold water within expansion vessels by maintaining circulation and eliminating stagnation.

The valve converts a standard single connection expansion vessel into a 'flow through' type by diverting a portion of the flow into the vessel so that the water content is continually renewed to prevent water stagnation, which can cause Legionella growth.

The ¾" valve also has a rotatable tee-piece and wall bracket, however, both options include a ball valve to allow for quick and easy flexible installation. The Anti-Legionella Valve can be used on any standard vessel with a ¾" or up to 1 ¼" connection.

Features and benefits

- Maintains circulation through an expansion vessel
- Prevents stagnation
- Easy to install
- Includes ball valve for simple maintenance
- Rotatable tee-piece (¾" version only)
- Use on any standard vessel with ¾" or 1 ¼" connection (max wall mounting size 24 litre)
- 1/4" drain plug
- Suitable for cold water use only

SKU	Description	BSP size (inches)
ANTI100001	FBSP Anti-Legionella Valve	¾"
ANTI100005	FBSP Anti-Legionella Valve	1 ¼"

Accreditation:



Differential Bypass

The differential bypass valve is used to stabilise the circulation, flow rate and pump pressures in central heating systems. Designed for a quick and simple installation.

Features and benefits

- Easy to operate and set the differential opening pressure
- Automatically stabilises circulation flow rate in pumped heating systems when the thermostatic radiator or zone valves close, thus protecting the pump against a closed head
- Easily adjustable differential pressure setting reduces commissioning time
- Virtually maintenance-free once installed

SKU	Description	Outlet size (mm)
DIFF400001	Auto Bypass Valve – Straight	22mm
DIFF400005	Auto Bypass Valve – Angled	22mm



Automatic Air Vents

Automatically releases air from heating systems without the need for additional bleeding.

When air becomes trapped in a sealed heating system it can cause a wide variety of problems including excessive noise, corrosion and increased maintenance costs as it can also cause air locks and prevent the system from operating effectively and efficiently.

Automatic air vents are most suited for heating systems and other closed circuit hot water systems which require an efficient and automatic removal of air whilst the system fills with water. A vacuum break is fitted onto the bottom of the valve in order to prevent an air lock forming and encourages air to be released from the water within the system.

The Reliance Automatic Air Vent are high-quality solid brass & heat resistant polypropylene to provide long life and durability in heating systems to help vent air when commissioning a system. Available with MBSP, compression or push-fit connections.

Features and benefits

- Automatically vents trapped air from within sealed heating systems
- Robust solid brass construction and heat resistant polypropylene float
- Available with a variety of connection ends



SKU	Description	Model	Outlet size (mm)	BSP size (inches)
AVEN100001	Automatic Air Vent	–	–	3/8
AVEN100003	Automatic Air Vent	Compression	15	–
AVEN100005	Automatic Air Vent	–	–	1/2
AVEN300001	Automatic Air Vent with JG Speedfit Connections	JG Speedfit Connections	15	–
AVEN450001	Automatic Air Vent Nickel	Nickel plated	–	1/2

Filling Loop with Integral Check Valve

Cold water filling hose for sealed central heating systems with integral check valve and isolator.

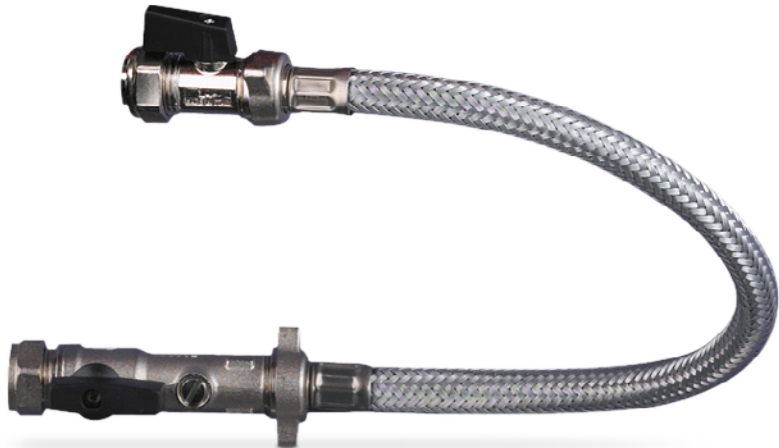
Reliance Valves Filling Loop is a pipe connection to a central heating system to re-fill or re-pressurise the system from the mains water supply. The boiler filling loop feeds water back into the system and is detached once the system has been filled to the adequate pressure.

The filling loop is not part of the boiler system and is detached ready for re-use after each use. Both connections on the pipe are fitted with valves to allow the user to easily cut off the water supply and disconnect the pipe.

Protecting against Category 3 contamination risks, the filling loop has been designed with 15mm compression connections, thumb-grip nuts on the hose and a ball valve for easy operation and installation. It also comes with an integral check valve and isolator.

Features and benefits

- 3/8" BSP test port on isolating double check valve
- 15mm compression connections
- Protects against Category 3 contamination risks
- Ball valve with lever for easy operation
- Metal watertight blanking cap for additional security
- Braided hose of 9mm nominal bore, with thumb-grip nuts on hose to allow quick connection/disconnection to mains supply
- Suitable for cold water use only



SKU	Description	Outlet size (mm)	BSP size (inches)
FIBV246208	Filling Loop with Integral Check Valve	15	–
BCAP246200	Filling Loop Sealing Cap & Tag	–	1/2

Accreditation:



Temperature Control

One of the key competencies of Reliance Valves is the design, manufacture and distribution of advanced Thermostatic Mixing Valves (TMV) for both point of use and whole system control. As a global leader in the field, we offer a vast range of products to suit many different applications.



Heatguard® Tempering Valve

High flow and temperature rate tempering valve for blending hot and cold water to limit overall hot water temperature (domestic use).

Reliance Valves Heatguard® Tempering Valve connects to hot water supplies in residential and multi-occupancy buildings to ensure safe water temperature at tap level. The valve ensures that water reaching the outlet does not exceed 55°C, which is the minimum recommended circulating temperature.

The tempering valve mixes hot and cold water to deliver a constant temperature throughout the entire house, building or system, and is typically installed in conjunction with electric water heaters within hot water systems. The valve does not remove the need for further point of use mixing valves at outlets, as it blends at higher outlet temperatures than a standard thermostatic mixing valve.

Features and benefits

- Provides a stable mixed outlet temperature
- Pre-set and locked at 55°C (adjustable between 35-70°C)
- Easy to install direct compression connections
- Tamperproof cap
- Suitable for installation to hot water outlet pipework from a cylinder
- Compatible with copper pipe only

SKU	Description	Model	Outlet size (mm)
HEAT110505	Heatguard® tempering valve	Direct Compression	22



Accreditation:



Adjustable outlet temperature between 35°C & 70°C

Tamperproof lockable cap

Direct compression fittings for easy installation

Inlet temperature up to 99°C

Provides stable mixed water temperature at a high flow rate

Masterguard Commercial Tempering Valve



High flow and temperature rate tempering valve for blending hot and cold water to limit overall hot water temperature (commercial use).

Reliance Valves Masterguard Commercial Tempering Valve is a high-quality thermostatic tempering valve for system temperature control and commercial hot water distribution. It is designed for use in hot water cylinder applications.

Designed for very high flow rates and temperatures, the valve is primarily used where control and distribution of large sanitary mixed water flows is required. Normally installed within a plant room, Masterguard blends hot and cold water to a safer temperature (typically 50°C) for distribution throughout the building. It also has integrated fixing points to allow for easy wall or floor fixing and can be easily orientated to match inlet pipes.

Features and benefits

- 4-in-1 tempering valve with isolation valves, crossflow protection valves and strainers
- Very high flow rates with an extremely stable outlet temperature
- Adjustable set temperature mechanism with locking feature
- Integrated fixing point allows easy wall or floor mounting
- Simple construction with minimal moving parts reduces maintenance
- Suitable for installation to hot water outlet pipework from a cylinder
- Compatible with copper pipe only

SKU	Description	Model	Outlet size (inches)
MIX83004	Masterguard FBSP Commercial Tempering Valve	830 Model	1
MIX84004	Masterguard FBSP Commercial Tempering Valve	840 Model	1 ¼
MIX85004	Masterguard FBSP Commercial Tempering Valve	850 Model	1 ½
MIX86004	Masterguard FBSP Commercial Tempering Valve	860 Model	2

Easifit TMV2/3 Thermostatic Mixing Valve

Compact mixing valve that blends hot and cold water thermostatically to ensure a safe outlet temperature (approved for domestic, public and healthcare sectors).

Reliance Valves Easifit Thermostatic Mixing Valve blends hot and cold water to ensure safe and comfortable water temperature, reducing the risk of accidental injuries and burns.

Ultra-compact and lightweight, Easifit is ideal for use in tight spaces such as under basins, baths and shower installations. The valve complies with all applicable UK and European performance standards.

Using unique technology, Easifit can function at a flow rate as low as 1 lpm, the lowest by far in the industry, and is also resistant to scale and other system contaminants ensuring increased valve longevity.

The 2-in-1 valve includes check valves as well as strainers that protect both the check valves and the main valve, whereas the 4-in-1 valve includes an isolating valve, check valve, strainers and test port for monitoring system pressure and temperature.

Available with flat faced unions or JG Speedfit push-fit connections, which can be fitted and demounted without the need for tools.

Features and benefits

- Suitable for BREEAM projects as the valve operates at flow rates as low as 1lpm (15mm version only)
- Works in larger areas up to 10:1 pressure differential, exceeding the industry standard of 5:1
- Features Viton seals instead of EPDM to significantly improve performance at higher temperatures
- Available with flat faced union on hot and cold connections or JG Speedfit push-fit for fast and simple installation and maintenance
- Suitable for shower, bath, basin and bidet hot water applications
- Flat faced union version can be used with copper pipe only
- JG Speedfit push-fit version is suitable for Speedfit PEX and polybutylene barrier pipe (inserts required) or copper pipe



SKU	Description	Model	Outlet size (mm)
HEAT112010	Easifit 15mm 2-in-1 Thermostatic Mixing Valve	2-in-1 Union	15
HEAT112015	Easifit 22mm 2-in-1 Thermostatic Mixing Valve	2-in-1 Union	22
HEAT112050	Easifit 15mm 4-in-1 Thermostatic Mixing Valve	4-in-1 Union	15
HEAT112055	Easifit 22mm 4-in-1 Thermostatic Mixing Valve	4-in-1 Union	22
HEAT155010	Easifit 15mm 2-in-1 Thermostatic Mixing Valve with JG Speedfit connections	2-in-1 Direct Connection	15

Accreditation:



Thermostatic Mixing Valve

Thermostatic mixing valves can be used in domestic or collective installations.

They can be installed either under the water heater or directly in the bathroom entrance to ensure the comfort and safety of the users.

Features and benefits

- Prevents burns due to too high output temperature
- Compact valve
- Easy to use and install

Not available in the UK.

SKU	Description
HEAT112100	Thermostatic mixing valve MBSP 1/2"
HEAT112110	Thermostatic mixing valve MBSP 3/4"

Accreditation:



Backflow Prevention

Reliance Valves Backflow Prevention Valves keep water supplies sanitary and safe by protecting plumbing systems from contamination, back pressure or back siphonage.

From single check valves to double check valves, through to more specialised Reduced Pressure Zone (RPZ) Preventers for commercial and healthcare settings, we offer an extensive range suitable for different types of Fluid Category risk. Our RPZs incorporate a one-piece cartridge to make servicing and maintenance fast and simple, while minimising downtime.

Available with compression and BSP unions for installation flexibility.



What is backflow?

Backflow is a term which is used to describe water which is flowing in a direction contrary to the intended ‘normal’ direction of flow within or from a water fitting.

This may be caused by either back siphonage; a system condition where there is a sudden interruption of a supply to a property, thus creating a vacuum in the pipework or backpressure; where the incoming pressure from the supply is less than the pressure within the plumbing system.

As protection of drinking water is vital to public health, water regulations stipulate that backflow prevention devices should be fitted to plumbing system to ensure that, even if backpressure or back siphonage occur, the water supply will not be contaminated as a result.

Fluid categories and risks, as scheduled in the The Water Supply (Water Fittings) Regulations 1999:

Fluid category	Description	Example
1	Wholesome (drinking) water supplied by the undertaker	Water direct from a water undertaker’s main
2	Wholesome (drinking) water which has been changed either heated or altered in taste, odour or appearance	Hot water
3	Fluids posing a slight health hazard	Low toxicity chemicals such as common disinfectants
4	Fluids posing a significant health hazard	Toxic substances such as pesticides and environmental organisms
5	Fluids posing a serious health hazard	Pathogenic organisms, radioactive or very toxic substances such as faecal matter

Floguard Single Check Valves

Brass slimline single check valve for Fluid Category 2 contamination risks.

Reliance Valves Floguard Single Check Valves protect against the risk of backflow and back siphonage contamination. The compact and lightweight valves are ideal for all class 2 contamination risks as per The Water Supply (Water Fittings) Regulations 1999.

Class 2 contamination risks apply to any water supply that could cause backflow into drinking water giving it a foul taste but without causing medical problems for the user. Floguard allows high flow rate with minimum pressure drop, offering good flow rates through the single check valve.



Features and benefits

- Single check valve protects against the risk of backflow and back siphonage contamination
- Compact lightweight construction for easy installation
- Minimum pressure drop offer good flow rates
- Available with FBSP and compression connections
- Suitable for hot and cold water use only
- Compatible with copper pipe only

SKU	Description	Model	Size (mm)	BSP size (inches)
FLOW235001	Floguard Single Check Valve	Type EB Backflow Prevention Device	15	–
FLOW235002	Floguard Single Check Valve	Type EB Backflow Prevention Device	22	–
FLOW235003	Floguard Single Check Valve	Type EB Backflow Prevention Device	28	–
FLOW235004	Floguard FBSP Single Check Valve	Type EB Backflow Prevention Device	–	½
FLOW235005	Floguard FBSP Single Check Valve	Type EB Backflow Prevention Device	–	¾
FLOW235006	Floguard FBSP Single Check Valve	Type EB Backflow Prevention Device	–	1
FLOW235007	Floguard FBSP Single Check Valve	Type EB Backflow Prevention Device	–	1 ¼
FLOW235008	Floguard FBSP Single Check Valve	Type EB Backflow Prevention Device	–	1 ½
FLOW235009	Floguard FBSP Single Check Valve	Type EB Backflow Prevention Device	–	2

Accreditation:



Floguard Double Check Valves

Brass slimline double check valve for Fluid Category 3 contamination risks.

Reliance Valves Floguard Double Check Valves protect against the risk of backflow and back siphonage contamination. The compact and lightweight valves are ideal for all class 3 contamination risks as per The Water Supply (Water Fittings) Regulations 1999.

Double check valves contain two valves so that if one valve fails, the other acts to prevent backflow and contamination in the mains water supply. The valves contain a check cartridge that under normal conditions is held closed by pressure within the system. When vacuum conditions occur, the suction causes the check cartridge to open and air to flow through, equalising the pressure within the hot water heater.

Features and benefits

- Double check valves protects against the risk of backflow and back siphonage contaminations
- Compact lightweight construction for easy installation
- Minimum pressure drop offer good flow rates
- Available with FBSP and compression connections
- Suitable for hot and cold water use only
- Compatible with copper pipe only



SKU	Description	Model	Size (mm)	BSP size (inches)
FLOW230005	Floguard FBSP Double Check Valve	Type ED Backflow Prevention Device	–	½
FLOW230006	Floguard FBSP Double Check Valve	Type ED Backflow Prevention Device	–	¾
FLOW230007	Floguard FBSP Double Check Valve	Type ED Backflow Prevention Device	–	1
FLOW230008	Floguard FBSP Double Check Valve	Type ED Backflow Prevention Device	–	1 ¼
FLOW230009	Floguard FBSP Double Check Valve	Type ED Backflow Prevention Device	–	1 ½
FLOW230010	Floguard FBSP Double Check Valve	Type ED Backflow Prevention Device	–	2

Accreditation:



Tundishes

Backflow prevention device for Category 5 fluid risks with AA type air gap.

Reliance Valves range of plastic tundishes are most commonly installed within heating and cooling systems to act as a safety device for pressure and temperature relief valves. Water flowing through a tundish is an indication of a fault with the system and alerts the occupants of the building to the fault.

Tundishes also act as a backflow prevention valve with its primary purpose to prevent cross-contamination between a water systems overflow or discharge pipe and a sewer line or drain. It also incorporates a slimline AA type air gap and is available in a variety of angles and sizes.

Features and benefits

- Type AA backflow prevention
- Slimline design (some models)
- Wide range of sizes
- Suitable for hot and cold water use only



SKU	Description	Model	Inlet size (mm)	Outlet size (mm)	FBSP inlet size (inches)	FBSP outlet size (inches)
TUND219005	Tundish	Straight Slimline Black Plastic	15	22	–	–
TUND219015	Tundish	Straight Black Plastic	22	28	–	–
TUND300001	Tundish	Straight Epoxy Mild Steel	–	–	1	1 ¼
TUND300003	Tundish	Straight Black Plastic	–	–	1 ¼	1 ½
TUND300004	Tundish	Straight Epoxy Mild Steel	–	–	1 ½	2
TUND300005	Tundish	Straight Epoxy Mild Steel	–	–	2 ½	3
TUND300006	Tundish	Straight Epoxy Mild Steel	–	–	2	2 ½

Commercial Type BA RPZ Valve

Protects plumbing systems from contamination, back pressure or back siphonage up to Fluid Category 4.

Reliance Valves Backflow Preventer is a unique valve that is ideal for protecting commercial and industrial plumbing systems from contamination up to and including Fluid Category 4. Easy to service and maintain, the valve offers BA type backflow prevention to protect plumbing systems from contamination, back pressure and back siphonage.

Compliant with UK water regulations (BS EN1717) and approved by KIWA, the valve is made from lead-free 4MS compliant DZR brass. Incorporating a one-piece cartridge, the valve is easy to access which makes servicing and maintenance fast and simple, while minimising downtime. The valve is designed with a detachable upper body to make the cartridge more accessible.

Features and benefits

- Highest level of mechanical protection against backflow and contamination (Fluid Category 4)
- Lead-free and non-toxic 4MS compliant DZR brass body
- Easily accessible one-piece cartridge and detachable upper body for fast and simple servicing
- Test point isolating valves and caps for quick and easy testing
- Integral cartridge strainer protects the valve from system debris
- Integral tundish with FBSP connections creates an air gap between the wastewater and the mains water supply
- Flat faced union MBSP connections allow the body to be removed without disruption to the pipe work
- Flat faced unions make servicing and replacing the valve quick and easy
- Lever ball valves also available for up and downstream supply isolation
- Suitable for cold water use only
- Compatible with copper and MDPE pipe (further fittings required)



SKU	Description	Model	BSP size (inches)
RPZV270001	Commercial Reduced Pressure Zone Valve	Type BA Backflow Prevention	½
RPZV270005	Commercial Reduced Pressure Zone Valve	Type BA Backflow Prevention	¾
RPZV270010	Commercial Reduced Pressure Zone Valve	Type BA Backflow Prevention	1
RPZV270015	Commercial Reduced Pressure Zone Valve	Type BA Backflow Prevention	1 ¼
RPZV270020	Commercial Reduced Pressure Zone Valve	Type BA Backflow Prevention	1 ½
RPZV270025	Commercial Reduced Pressure Zone Valve	Type BA Backflow Prevention	2

Accreditation:



Compact STBA RPZ Valve

Protects plumbing systems from contamination, back pressure or back siphonage up to Fluid Category 4 (STBA type backflow prevention).

Reliance Valves Reduced Pressure Zone Valve incorporates multiple check valves and can provide protection against back pressure and back siphonage of up to Fluid Category 4.

An RPZ valve is one of the safest and most reliable backflow preventer valves available. RPZ valves offer protection against back pressure and siphonage to protect the mains water supply and drinking network from contamination.

When pressure rises in the system, the valve evacuates waste water from the system when there is a drop in pressure to prevent water from flowing back into the main pipeline from individual premises.

The compact design includes an interchangeable flange plat connection to allow for both horizontal and vertical piping arrangements, making it ideal for retrofit applications and installations where space for the valve is restricted.

Features and benefits

- Compact STBA RPZ valve
- Protects against back pressure and back-siphonage in applications up to Fluid Category 4
- Flange can be mounted in any position, providing the tundish faces downwards
- All serviceable components can be accessed easily for maintenance
- Suitable for cold water use only
- Compatible with copper and MDPE pipe (further fittings required)



SKU	Description	Model	BSP size (inches)
RPZV250001	Compact Reduced Pressure Zone Valve	Type STBA Back Flow Prevention	½
RPZV250005	Compact Reduced Pressure Zone Valve	Type STBA Back Flow Prevention	¾

Electronic Controls & Thermostats

Control and safety are vital elements of unvented system design. Reliance Valves market a large range of products that help maximise the control and efficiency of hot water and heating systems.

Reliance Valves Thermostats are a range of easy-to-use heating controls for radiators, underfloor heating systems and hot water cylinders.

Our stylish programmable thermostats for radiator and underfloor heating systems, provide precise control over temperatures set in each room. Our cylinder thermostats are surface mounted onto a hot water cylinder to prevent overheating and scaled water from running through the system. We also offer a contact cylinder thermostat that can be strapped directly to the pipework.



Cylinder Thermostats

Installed to a hot water cylinder to prevent overheating.

Reliance Valves cylinder thermostats are designed for surface mounting on domestic hot water cylinders to keep water at the desired temperature.

The element attached to the temperature dial on the cylinder thermostat senses the temperature of the water inside and, when the water cools below the desired level, the element is turned on to bring it back up to temperature again.

Our cylinder thermostats restrict water temperature to a maximum of 82°C to provide safety and prevent scalding water from running through the system. Pockets are also available separately.

Features and benefits

- Dual thermostat combines high limit and temperature control thermostat in one unit
- High limit restricts to maximum 82°C
- Temperature control for user flexibility
- Pockets available separately
- Suitable for hot water applications only

SKU	Description	Model
STAT500025	Dual Thermostat	30-70°C 85mm probe, no pocket
STAT500030	Single High Limit	Single High Limit C/Out 82°C Thermostat including pocket
STAT400040	Single Control Thermostat	Single Control Thermostat 30-90°C including pocket
PCKT100001	Stainless Steel Pocket	Stainless steel pocket for dual thermostats (85mm)
PCKT100005	Copper Pocket	Copper pocket for dual thermostats (85mm)



Two Port Zone Valves

240V Two Port Zone Valves for use in heating systems to isolate zones or equipment when the motor is de-energised.

Features and benefits

- Easy to use, clip-on detachable head
- Hardwired cable supplied to connect to motorised head
- Metal manual operating lever for strength and stability
- The motorised head can be retrofitted to other manufacturers' valve bodies

SKU	Description	Model	Outlet size (mm)
ZONE250305	2 Port 22mm Zone Valve (hard wired)	2 Port Zone Valve with detachable head	22
SKIT250305	Spare Actuator for Reliance Valves 2 Port Zone Valve	Replacement 230v Actuator Head for Zone Valves	22



240v Wired Programmable Thermostat

Wired programmable room thermostat for underfloor heating.

Reliance Valves UFH Controls 240v wired programmable thermostat is a stylish and simple way to control wet underfloor heating systems.

Easily mounted on the wall, the thermostat signals the Reliance Valves wiring centre to provide heat to an individual room. Its user-friendly interface makes adjusting and programming temperatures fast and simple.

Ideal for new builds and renovations, the back plate is fitted before decorating begins and the front plate is installed once work is completed to avoid any damage. Designed to suit a standard pattress box, the thermostat is also ideal when replacing an existing thermostat.

When used with the Reliance Valves UFH Controls app, underfloor heating can be remotely controlled on the go.

Features and benefits

- 7-day programme, 15-minute increments and 6 on/off times give maximum user control and flexibility
- Inbuilt ambient temperature sensor and further connections for an optional external temperature probe to protect against excessive floor temperatures
- Key lock feature to protect against vandalism and unwanted program changes
- Open window function can be selected to stop the boiler firing during short term temperature drops

SKU	Description
STAT100010	Reliance Valves 240v Wired Programmable Room Thermostat – White
STAT100011	Reliance Valves 240v Wired Programmable Room Thermostat – Black



Battery Operated RF Programmable Thermostat

The Reliance Valves Battery Operated RF Programmable Thermostat is a user friendly and stylish way to control the on/off times, set programs and simply adjust the temperature in a room.

Specifically designed for underfloor heating applications, and easily surface mounted, the thermostat communicates with the Reliance Valves RF wiring centre via a radio signal, eliminating the need for further wiring.

When used in conjunction with the Reliance Valves Gateway and app, it offers remote access to your heating – even on the go.

Features and benefits

- 7 day programmable, 15-minute increments, 6 on/off times give maximum user control and flexibility
- Inbuilt ambient temperature sensor and further connections for an optional external temperature probe to protect against excessive floor temperatures
- RF communication to the RF wiring centre saves cost on enabling and eliminates the potential for damage caused by additional wiring during installation
- Key lock feature to protect against vandalism and unwanted program changes



SKU	Description
STAT100020	Reliance Valves Battery Powered RF Programmable Room Thermostat – Black
STAT100021	Reliance Valves Battery Powered RF Programmable Room Thermostat – White

240v Wired RF Programmable Thermostat

The Reliance Valves 240v Wired RF Programmable Thermostat is a user friendly and stylish way to control the on/off times, set programs and simply adjust the temperature in a room.

Specifically designed for underfloor heating applications, the thermostat communicates with the Reliance Valves RF wiring centre via a radio signal, eliminating the need for further wiring.

The thermostat is designed to suit a standard sized pattress box – so can easily be installed to replace an existing thermostat. When used in conjunction with the Reliance Valves App, it offers remote access to your heating – even on the go.

Features and benefits

- 7 days programmable, 15 minutes increments, 6 on/off times give maximum user control and flexibility
- Inbuilt ambient temperature sensor and further connections for an optional external temperature probe to protect against excessive floor temperatures
- Key lock feature to protect against vandalism and unwanted program changes
- RF communication to the RF wiring centre saves cost on cabling and eliminates the potential for damage caused by additional wiring during installation, programming times
- Open window function can be selected to stop the boiler firing during short term temperature drops
- The system is compatible for use with Alexa or Google Home voice control



SKU	Description
STAT100015	Wired and 240V Wired RF Thermostat – White
STAT100016	Wired and 240V Wired RF Thermostat – Black

240v Hot Water Timer

The Reliance Valves 240v Wired Hot Water Timer is a user friendly and stylish way to control the on/off times and set programs of your hot water.

The timer is easily mounted and communicates with the hot water valve directly to the Reliance Valves wiring centres, providing bespoke hot water demand control.

The timer is designed to suit a standard sized pattress box.

Ideal for new build and renovation applications, the two part timer allows for the back plate to be fitted during decoration and the front plate can then be installed once works are completed, preventing damage.

When used in conjunction with the Reliance Valves App, it offers remote access to your hot water – even on the go.

Features and benefits

- Mains-wired hot water timer that is easy to install and set up
- 7-day programme, 15 minutes increments, 4 on/off times give maximum user control and flexibility
- Key lock function protects against vandalism and unwanted programme changes
- Hot water boost function allows 1-9 hours heating in case of low temperatures in between programming times
- Using the Reliance Valves app is possible which gives mobile access to system information and settings – so the user can operate and monitor the system remotely from any location
- The system is compatible for use with Alexa or Google Home voice control

SKU	Description
TIME100001	Reliance Valves Hot Water Timer – White
TIME100002	Reliance Valves Hot Water Timer – Black



Gateway

The Reliance Valves gateway is a mains powered, compact unit for connecting RF thermostats to the internet via WiFi.

When used in conjunction with the Reliance Valves app, it offers remote access to your heating – even on the go.

Features and benefits

- Mains power cable supplied
- Indicator lights to show status of device
- Compact and stylish design.
- Can be installed anywhere in the system, to hard wire router connection

SKU	Description
GWAY100001	Reliance Valves Gateway



Wiring Centres

The Reliance Valves Wiring Centres are an all in one junction box for underfloor heating systems.

Featuring 8 zone connections, it's easily mounted and with a fully labelled circuit board, its easy to wire. The wiring centre is an essential component to centralize underfloor heating wiring. The wiring centres have connections for zone valves (for additional radiators or hot water motorized valves), actuators, and pump and room thermostats.

When used in conjunction with the Reliance Valves Thermostats, Gateway and App, it offers remote access to your heating and your hot water – even on the go.

Features and benefits

- LED lights to show the power, thermostat, pump, boiler, and hot water status so system conditions can be monitored at a glance.
- Twin connections for actuators for each thermostat zone up to a maximum of 12
- Dip switches included for all 8 standard zones to stop the UFH pump activating when using the Reliance Valves wiring centre on a system with a mix of both radiators and underfloor heating
- All functions fully accessible from the front of the unit with no additional internal link wiring required

SKU	Description
WIRE200001	Reliance Valves 240v Wiring Centre
WIRE200050	Reliance Valves 240v/RF Wiring Centre

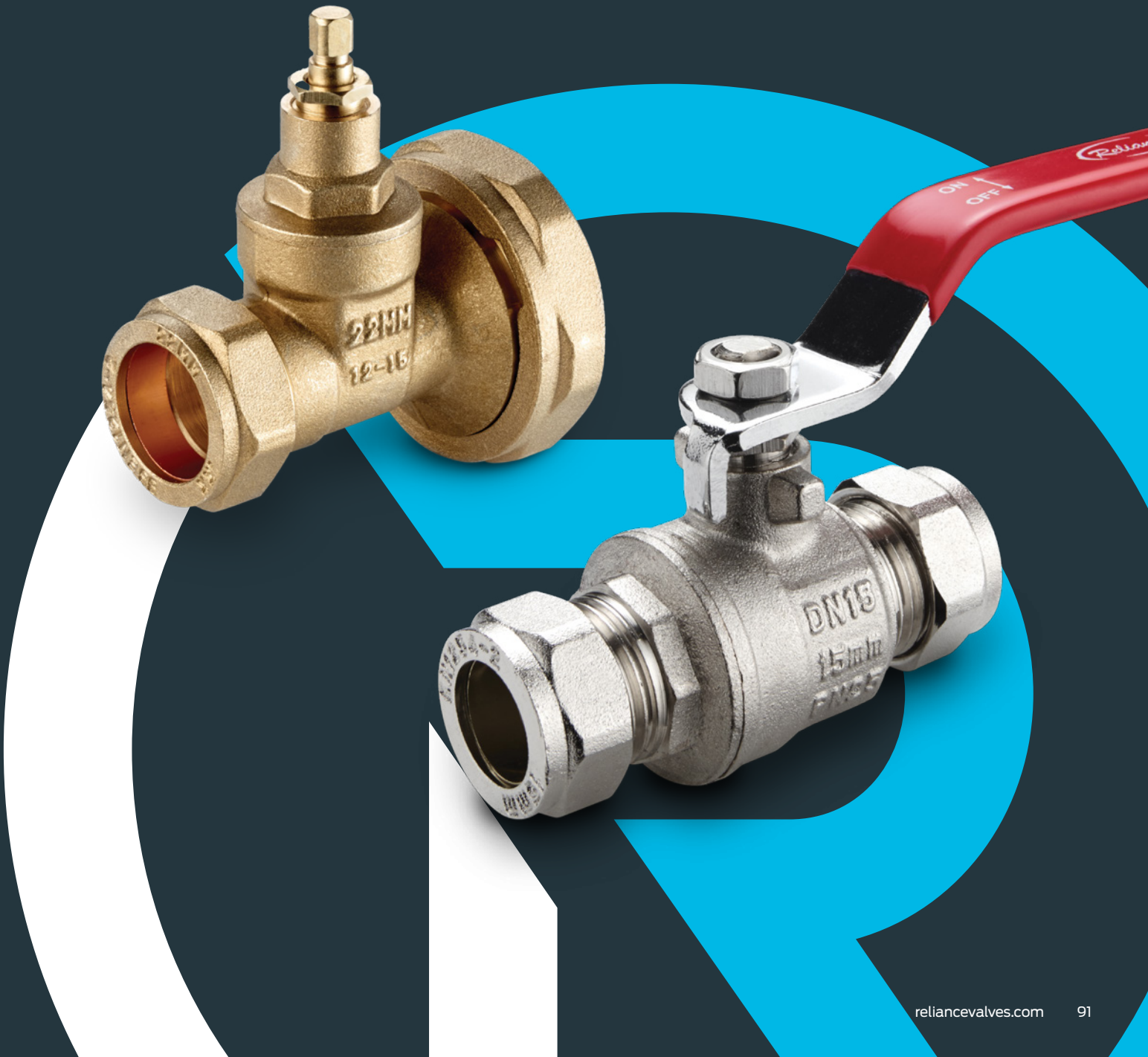


OEM Related Components

In addition to the specialist products that are used on all unvented systems, Reliance Valves also stock and market a large range of associated valves and controls that are widely used in the industry.

These OEM related components are ideal for both building pre-plumbed cylinders and for bespoke pre-packaged solutions designed to meet individual customer's requirement.

As always, quality and performance are key and Reliance Valves only source from a supplier-base of tried and trusted partner companies to ensure that only the best products find there way into our customers hands.



Flexible Hoses

A range of high quality WRAS approved stainless steel hoses with an EPDM liner.

Designed for potable water applications predominantly for flexible connection between the system and the expansion vessel. Various connection types and lengths available for installer flexibility.

Features and benefits

- Easy and quick connection of pipework to terminal fittings
- Negates the need for hard-piping



SKU	Description	Length	Size
HOSE202002	Flexible Hose	430mm	½" FBSP
HOSE202105	Flexible Hose	420mm	¾" FBSP
HOSE202106A	Flexible Hose	1000mm	¾" FBSP
HOSE202107	Flexible Hose	1250mm	12.5mm
HOSE202109	Flexible Hose	500mm	¾" MBSP & FBSP
HOSE265012	Flexible Hose	500mm	15mm x 3/8"
HOSE300001	Flexible Hose	220mm	½" X 3/8" FBSP

Accreditation:



Automatic Anti-Vacuum Valves

A compact range of Anti-Vacuum Valves for use with hot water heaters to prevent a vacuum forming in installations where there is the potential for the draw off rate to exceed the rate of flow to the inlet.

Features and benefits

- Automatic protection against a vacuum forming in hot water installation
- Solid brass body for long life
- Easy access to the internals from the top of the valve
- Quick and simple service



SKU	Description	Size
ADMT503001	Automatic anti vacuum valve	½" MBSP
ADMT503010	Automatic anti vacuum valve	¾" MBSP
ADMT503004	Automatic anti vacuum valve with pop-up indicator	15mm
ADMT503005	Automatic anti vacuum valve with pop-up indicator	22mm

Accreditation:



Mini Isolating Ball Valve

Isolates supply to a fixture or appliance without disruption to the main water supply.

Reliance Valves Mini Isolating Ball Valves are compact high-quality valves that offer durable and secure isolation. For quick and easy installation, the valve is screwdriver operated and uses compression connections.

The ball valves have a chromium plated ball, also made from brass, which is encapsulated between 2 NBR Elastomer seals. Available in either nickel plated or as self-coloured brass, the valves come in 15 and 22mm sizes. The valves are not suitable for chilled water applications and have a maximum working pressure of 16 bar.

SKU	Description	Model	Size (mm)
BVAL201001	Isolating Ball Valve	Brass finish	15
BVAL201002	Isolating Ball Valve	Nickel finish	15
BVAL201003	Isolating Ball Valve	Brass finish	22
BVAL201004	Isolating Ball Valve	Nickel finish	22
BVAL201200	Isolating Ball Valve	Nickel finish, high pressure (16 bar max)	15

Accreditation:



Features and benefits

- Compact high-quality valve offering durable and secure isolation
- Available in nickel and brass finish
- Chrome-plated brass ball encapsulated between 2 high grade NBR seals, gives smooth operation and reliability
- Compression connections for ease of installation
- Suitable for hot and cold water use only
- Compatible with copper pipe only



Protecto® YC In-line Strainer

In-line strainer for protecting valves and fixtures from system debris.

Reliance Valves Protecto YC is a range of compact in-line strainers with hot pressed bodies and compression connections for quick and easy installation.

The filter mesh is dual thickness 60 mesh (0.25mm aperture) stainless steel to provide water systems with superior protection from debris and resistance to damage. Designed with an O-Ring seal access port to the sleeve filter, the Protector YC allows for easy servicing with no need to replace.

SKU	Description	Size (mm)
LINS400002	Protecto YC Y Type Line Strainer	22
LINS400006	Protecto YC Y Type Line Strainer	28
LINS400101	Protecto YC Y Type Line Strainer	15

Features and benefits

- Protects water systems from debris
- Compression connections for simple low-cost installation
- Compact DZR brass body
- Access port to sleeve filter, allows servicing without replacing
- O-Ring seal on access port for ease of service
- Dual thickness gauze for improved resistance to damage
- Stainless steel 60 mesh filter
- Suitable for hot and cold and central heating applications
- Compatible with copper pipe only



Nickel Plated Lever Ball Valve for Water

Isolates supply to a fixture, appliance or room without disruption to the main water supply.

Reliance Valves Nickel Plated Lever Ball Valves are used in water applications to allow appliances or sections of plumbing within a building to be switched off, without the need for draining the whole system. The brass ball valve reduces and stops water flow, creating an isolation after the valve position. Reliance quarter turn ball valve fittings are available with a blue or red handle to help distinguish usage (generally hot and cold) and are EN331 compliant.

Typically, brass ball valves can be found at appliance outlets, such as washing machines and dishwashers to allow water supply to be cut off for installation and maintenance. We also offer in line washing machine valves with smaller handles which can be used in limited space areas.

Reliance Valves Nickel Plated Lever Ball Valves can also be used under kitchen or bathroom sinks to allow users to control tap water flow. Used in place of a standard service or isolation valve, a quarter turn valve can provide a more robust, easy to use shut off option for temporarily stopping water supply.

Due to the large handle, these valves are also recommended for use in specialist situations where the smaller screw type ball valves may not be suitable. The quarter turn ball valve is also available with Speedfit connections, for fast, secure and tool-free installation.

Features and benefits

- Range of full bore ball valves
- Nickel plated
- PN40 or PN25 FBSP variants available
- Easy to use lever handle with clear colouring to designate usage: red and blue for hot and cold water in accordance with EN331
- Not suitable for chilled water



SKU	Description	Model	Size (mm)	Size (inches)
BVAL400000	Lever Ball Valve	Female PN40 Ball Valve – red handle	–	½
BVAL400001	Lever Ball Valve	Female PN40 Ball Valve – blue handle	–	½
BVAL400010	Lever Ball Valve	Female PN40 Ball Valve – blue handle	–	¾
BVAL400011	Lever Ball Valve	Female PN40 Ball Valve – red handle	–	¾
BVAL400020	Lever Ball Valve	Female PN40 Ball Valve – blue handle	–	1
BVAL400021	Lever Ball Valve	Female PN40 Ball Valve – red handle	–	1
BVAL400030	Lever Ball Valve	Female PN40 Ball Valve – blue handle	–	1 ¼
BVAL400031	Lever Ball Valve	Female PN40 Ball Valve – red handle	–	1 ¼
BVAL400040	Lever Ball Valve	Female PN40 Ball Valve – blue handle	–	1 ¼
BVAL400041	Lever Ball Valve	Female PN40 Ball Valve – red handle	–	1 ½
BVAL400050	Lever Ball Valve	Female PN40 Ball Valve – blue handle	–	2
BVAL400051	Lever Ball Valve	Female PN40 Ball Valve – red handle	–	2
BVAL400060	Lever Ball Valve	Compression Ball Valve – PN25 – blue handle	15	–
BVAL400061	Lever Ball Valve	Compression Ball Valve – PN25 – red handle	15	–
BVAL400070	Lever Ball Valve	Compression Ball Valve – PN25 – blue handle	22	–
BVAL400071	Lever Ball Valve	Compression Ball Valve – PN25 – red handle	22	–
BVAL400080	Lever Ball Valve	Compression Ball Valve – PN25 – blue handle	28	–
BVAL400081	Lever Ball Valve	Compression Ball Valve – PN25 – red handle	28	–
BVAL400090	Lever Ball Valve	Compression Ball Valve – PN25 – blue handle	35	–
BVAL400091	Lever Ball Valve	Compression Ball Valve – PN25 – red handle	35	–
BVAL400100	Lever Ball Valve	Compression Ball Valve – PN25 – blue handle	42	–
BVAL400101	Lever Ball Valve	Compression Ball Valve – PN25 – red handle	42	–
BVAL400110	Lever Ball Valve	Compression Ball Valve – PN25 – blue handle	54	–
BVAL400111	Lever Ball Valve	Compression Ball Valve – PN25 – red handle	54	–
BVAL400120	Lever Ball Valve	Female PN40 Ball Valve – PN40 – blue handle	–	¾
BVAL400121	Lever Ball Valve	Female PN40 Ball Valve – PN40 – red handle	–	¾
BVAL400130	Lever Ball Valve	Female PN25 Ball Valve – PN25 – blue handle	–	2 ½
BVAL400131	Lever Ball Valve	Female PN40 Ball Valve – PN25 – red handle	–	2 ½
BVAL400140	Lever Ball Valve	Female PN40 Ball Valve – PN40 – blue handle	–	¼
BVAL400141	Lever Ball Valve	Female PN40 Ball Valve – PN40 – red handle	–	¼
BVAL400200	Lever Ball Valve	JG Speedfit Connections – blue & red handles	15	–
BVAL400210	Lever Ball Valve	JG Speedfit Connections – blue & red handles	22	–

Accreditation:



Floreg Isolating Valve & Strainer

Limits the flow rate of a supply pipe to a set limit, conserving water and limiting water wastage at outlets.

Reliance Valves Floreg Isolation Valves are used in individual outlets, such as taps and appliances, to allow ease of maintenance of specific sections of the system without having to shut off and drain large sections of the plumbing system.

The valves can be used to maintain flow rates at the desired level, which helps to save water and energy. Water flow is operated using the external lever on the isolating valve.

Floreg Isolation Valves also incorporate a flow regulator fitted downstream of the isolator and filter to allow ease of service. The flow regulator is available with flow regulation between 4 and 15 litres/min. The nickel plated valves have a plastic identity cap revealing the amount of flow regulation.

SKU	Description	Model	Size (mm)
SERV970000	Floreg Isolating Valve	4 litres/min set flow rate	15
SERV970001	Floreg Isolating Valve	6 litres/min set flow rate	15
SERV970002	Floreg Isolating Valve	8 litres/min set flow rate	15
SERV970003	Floreg Isolating Valve	10 litres/min set flow rate	15
SERV970004	Floreg Isolating Valve	12 litres/min set flow rate	15
SERV970005	Floreg Isolating Valve	15 litres/min set flow rate	15

Accreditation:



Features and benefits

- Serviceable without having to remove the valve from the installation
- Saves water and energy as well as providing isolation for servicing
- Provides even distribution when supplying multiple outlets
- Precise flow control enables designers to size systems accurately
- Ideal for retrofit or new build installations
- Available with flow regulators from 4 to 15 litres/min
- Interchangeable regulators allow flow rates to be easily altered
- Easy to install with 15mm compression connections
- Suitable for hot and cold water use only
- Compatible with copper pipe only



Pump Isolating Valves

A range of high quality, union style, pump isolating ball valves. Designed specifically with ‘soft’ seats to reduce the effects of scale build up and ensure longevity and leak tightness after long periods of non-use.

With a nickel plated finish and union by compression connections.

Features and benefits

- Allows for quick and easy removal of circulating pumps
- Anti-seize mechanism
- Flat faced union connections for direct connection to circulating pump

SKU	Description	Size (mm)
PSOL100001	Pump Isolating Valve	22mm x 1½"
PSOL100002	Pump Isolating Valve	28mm x 1½"



Accessories

SKU	Description	Size
ZELB250445	Drain off elbow	22mm x ¾"
ZELB250446	Drain off elbow	28mm x 1"
ZMTC250440	Draincock	½"
BVAL700001	Isolating ball valve – straight	22mm x 1"
BVAL700002	Isolating ball valve – angled	22mm x 1"
BALV900003	Ball valve with drain connector	–
BCAP420005	Blanking cap	–



Key information



Technical helpline

Our experts are only a phone call away to provide technical advice and answer installation enquiries.



Data sheets & guides

Handy install and user guides.



Support on your doorstep

Boasting one of the largest technical sales teams in the UK, we offer free specification, technical support and advice.



Bespoke kits

We are always happy to discuss your specific requirements so please get in touch.

Orders and enquiries

01895 449233

Our sales managers are on hand throughout the UK to discuss product selection and specification. Contact your local representative directly or call us.

Technical helpdesk

01895 425333

Support hours

8am to 5pm, Monday to Friday

Webchat

reliancevalves.com

Support hours

8.30am to 4.30pm, Monday to Friday

Conditions of sale

All purchases are subject to our standard terms and conditions of sale, which can be found on speedfit.com and reliancevalves.com. Prices are subject to VAT at the current rate.

Technical information

RWC and its family of products are specifically designed and manufactured to the technical specifications set out in our Technical Specification Guides on our websites. All products should be selected, used and maintained in accordance with these technical specifications and checklists. It is the end users responsibility to ensure that products are suitable for their intended application, are properly installed and maintained, and are used in accordance with our technical guides. RWC operates a programme of continuous product development, and therefore reserves the right to modify or amend the specification of our products without notice. All information in this publication is given in good faith, and believed to be correct at the time of going to print.





Reliance Worldwide
Corporation (UK) Limited

Horton Road
West Drayton
UB7 8JL
United Kingdom
Tel: +44 (0) 1895 449233

Z2105/148/0723

AN RWC BRAND
RWC