

Single Jet Water Meter - Cold & Hot

Measures water consumption within a commercial or domestic building (cold and hot water)

Overview

Reliance Valves Cold and Hot Water Single Jet Water Meter is used for secondary monitoring purposes in commercial and domestic buildings.

The dry dial cold water meter is suitable for both single and multiple outlets. Designated as a class A 'meter, it has a magnetic coupling to the dial from the turbine and can be fitted both horizontally and vertically.

Suitable for water operating temperatures of up to 30 °C on the cold water version and 90 °C on the hot water version, the valve has scale resistant integral components to ensure a long life. The dial can be rotated 360 ° to enable easy reading of the counter.

Features & benefits

- Scale resistant integral components offer long life and good accuracy
- Fully rotational dry dial enables easy reading of meter regardless of installation siting
- Compact design gives freedom of choice for either vertical or horizontal installation
- Designed to ensure silent operation
- Supplied with nuts, tails and washers
- Compatible with copper pipe

Standards & approvals

WRAS Approved

Manufactured by an ISO 9001 registered company

Conforms to ISO 4064 Part 1 class 'A'

Materials

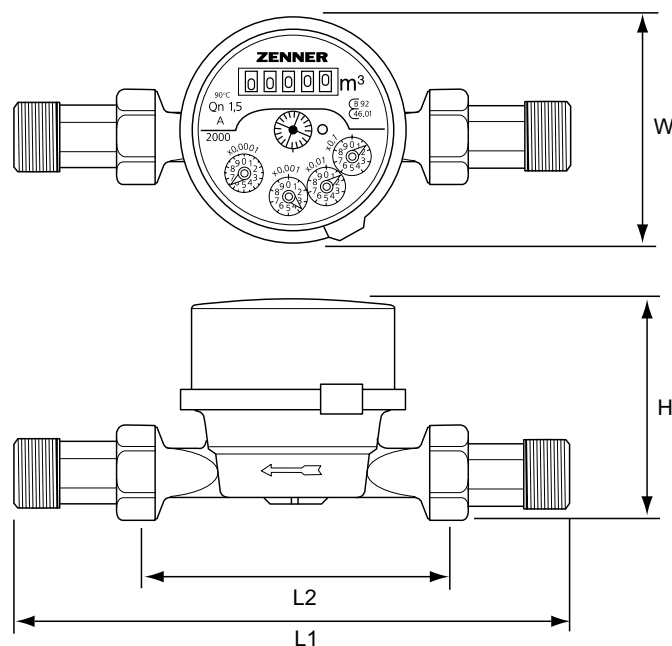
Main body	Stamped brass
Turbine paddle	Polyamide polymer
Counter casing	Polycarbonate
Counter components	Polystyrene
Gears	Acetyl polymer
Sealing plate	Polystyrene polymer
Bearing	Sapphire
Seals	Elastomer
Protective plating	Nickel

Specifications

Maximum temperature	16.0 bar
Pressure loss at Q_{max}	1.0 bar
Maximum operating temperature	30°C Cold / 90°C Hot



Dimensions – All measurements in mm unless otherwise



Product code	Description	Size	Nominal flow rates	L1	L2	H	W
WATM100001	Cold water	½" MBSP	1.5m³/h	190mm	110mm	69mm	72mm
WATM100004	Cold water	¾" MBSP	2.5m³/h	228mm	130mm	69mm	72mm
WATM110001	Hot water	½" MBSP	1.5m³/h	190mm	110mm	69mm	72mm
WATM110004	Hot water	¾" MBSP	2.5m³/h	228mm	130mm	69mm	72mm

